



Sustainability Assessment

Business Name Frisco Day Lodge
Business Category Recreation
Street Address 621 Recreation Way, Frisco CO
Mailing Address PO Box 4100, Frisco CO
Green Champion Nora Gilbertson
GC email NoraG@townoffrisco.com

Notes: As an institution, the Town of Frisco has instituted great workplace policies regarding sustainability and sets an excellent example of what workplace sustainability looks like. However, compliance with these policies isn't as strong outside of Town Hall. There are some structural barriers that limit the environmental practices of the Day Lodge, however there still improvements that can be made. These improvements are mostly behavioral, which will require more emphasis on staff buy-in and staff training.

Top recommendations:

1. Properly seal doors so cold air doesn't enter the building
2. Replace existing lighting with LED bulbs and fixtures
3. Conduct an audit of all paper supplies purchased. For those that do not contain recycled content or are not made from renewable resources, look for alternatives from your preferred vendors. Purchase these alternatives as allowed by the town's purchasing policy. See suggestions below.
4. Design and utilize consistent recycling signage with pictures that demonstrate what is and is not recyclable. Post these at all trash and recycling locations. Periodically meet with staff to offer refresher courses in proper recycling.
5. Begin composting back-of-house. At the very least, compost coffee grounds.
6. Create signage to engage and educate guests about the sustainability practices in the building and in town
7. Use third-party certified cleaning products for general cleaning

Program Requirements:



- ✔ Complete on-site sustainability assessment, including energy and lighting audit.
- ✔ Recycle newspaper, magazines, office paper, cardboard and co-mingled containers (plastic, glass aluminum).
- ✔ Educate your staff and customers about your environmental efforts and commitment.
- ✔ Display Frisco Clean Tracks decal.
- ✔ Identify and accomplish at least one new sustainable action that your business will achieve this year.




For HC3 Energy Audit Staff to complete

Built Environment - Energy		
2		Use of occupancy sensors or timers where appropriate. 2 POINTS <i>These are relatively inexpensive to install and the rebate for a wall mount occupancy sensor from Xcel is \$30/sensor. A good rule of thumb is that each wall mount sensor will save you \$10 annually.</i>
5		Replace less efficient lighting with more efficient lighting. Points will be based on the percentage of lighting that is energy efficient. 10 POINTS

		<p><i>For Xcel lighting rebates and coaching:</i> <i>Allyson Calderon Customer Service Representative</i> <i>CLEAResult</i> <i>Implementing the Xcel Energy Small Business Lighting Program</i> <i>600 17th St. Box38 Suite 400 Denver, CO 80202</i> <i>(720) 548-1160 ext. 1807 Phone (720) 636-8396 Fax </i></p>
N		Replace incandescent or halogen lights with more efficient bulbs (CFL or LED).
N		Replace older (T-12-type, magnetic ballast) fluorescents with more efficient fluorescents (T8 or T5, electronic ballast).
2		Install programmable thermostats to maximize heating and cooling efficiency. 2 POINTS
1		Turn down water heater thermostats to 120 degrees F. 1 POINT
6		When heating or cooling, do not prop doors open (if recommended in audit as energy priority). 10 POINTS
5		Install/maintain appropriate insulation (in attic, walls). Points will be assigned as a percentage of completed insulation. Example: 20% of all wall cavities including attic = 1 point. 5 POINTS
2		Install/maintain appropriate air sealing (caulk/sealing/weather stripping around windows and doors; sealing around connections to unconditioned space, especially high and low in building). Points will be assigned as a percentage of completed air sealing. 5 POINTS
5		Restore historic windows. 5 POINTS
5		Purchase Energy Star computers, monitors, printers, and other commercial appliances. 5 POINTS
1		Minimize phantom load with smart strips. 1 POINT
10		Upgrade mechanical equipment to high efficiency models. 92% Annual Fuel Utilization Efficiency (AFUE) or better. 10 POINTS (15 POINTS for hotels, lodges and property management companies)
Water Conservation		
1		<p>Use water conservation policies like installing low-flow fixtures on faucets/shower heads, replace old toilets with new low-flush toilets, or improve efficiency of existing toilets. 2 POINTS (5 POINTS for hotels, lodges and property management companies)</p> <p>High efficiency toilets (1.28 gpf) are installed in bathrooms. Restroom sinks do not have aerators.</p>
0		<p>Communication of water conservation message. 2 POINTS.</p> <p>No water conservation messaging posted. Post signs to remind guests of water conservation strategies in the restrooms. What about the snowmaking equipment? Is it designed to be water efficient? Post information so guests can read about your own water conservation efforts.</p>
NA		Install an auto shut-off device for sprinkler system. 2 POINTS
NA		Set sprinkler system so that it runs outside the hours of 10 a.m. to 4 p.m. 2 POINTS
Good Neighbor policy		
3		<p>Business is invested and involved in local community. Examples include donating time or money to local charities, encouraging employees to volunteer, offering training/workshops to employees or other businesses in the industry on best practices regarding social and environmental responsibility, and/or social activism efforts to bring about changes in the industry that will benefit the environment. 3 POINTS</p> <p>The Town of Frisco offers grants to local organizations. Its Wellness Program includes volunteering as one of its challenge activities.</p>
Sustainability Policy, Action Plan and/or Report		

3		<p>Sustainability policy and/or action plan for monitoring the company's sustainability performance. Should identify the company's vision, sustainability objectives/goals, and is focused on continual improvement. 3 POINTS</p> <p>Policy or Plan should address at a minimum:</p> <ul style="list-style-type: none"> a) business planning b) workplace practices c) employee engagement d) environmental management e) supply chain management f) community and ecosystem impacts g) customer communications h) sector specific best practices <p>Clean Tracks is the towns official sustainability platform. However, Clean Tracks should be updated to reflect actions accomplished 2009 – 2012 and provide a new set of next steps. Currently, the Town includes environmental messaging in its hiring paperwork. The Town also has a purchasing policy.</p>
Guest and Employee Education		
0		<p>The company educates both customers and employees about the sustainability initiatives of the business. For example, the business provides training/literature on proper recycling and the importance of conserving water and energy. When guests arrive, the company informs customers about their sustainability efforts. 3 POINTS</p> <p>At the Day Lodge, it would be a good idea to talk about the conservation ethic of the Town to let visitors know that these are values held by the town (create a social norm). It's also a good idea to include information on the Town of Frisco website talking about the sustainability measures practiced at the Day Lodge.</p>
Green Team		
2		<p>Establish a green team (for small businesses may be one or two people). 2 POINTS</p> <p>TOF has a green team, and there is a representative from the Day Lodge on the team.</p>
Transportation		
NA		<p>Company uses vehicles that are hybrid/electric, get 40 mpg or above or runs on alternative fuel. 10-15 POINTS (for businesses that have 1 to 5 vehicles - 10 POINTS) (for businesses that have 10 or more vehicles - 15 POINTS)</p>
6		<p>Participation in Green Commutes program and/or provide incentives for alternate commuting, flexible work arrangements, alternative transportation, walking or biking. 6 POINTS</p> <p>TOF's Got Gas? Program should be considered a model for our community.</p>
NA		<p>Create a vehicle purchase plan that includes improvements to fuel efficiency or delivery reduction plan which limits the number of deliveries made and received. 2 POINTS (8 POINTS for companies that make deliveries)</p>
NA		<p>(Restaurants) Purchase and use local food. (Retail) Purchase retail items from local or fair-trade manufacturers. 7 POINTS</p>
Waste Reduction		
2		<p>Recycle newspaper, magazines, office paper, cardboard and co-mingled containers (plastic, glass, aluminum). 5 POINTS</p> <p>All accepted materials are collected for recycling. Paper recycling bins are located behind the check-in desk. Glass is separated in the kitchen. However, the guest-use recycling bins lack good signage. Because contamination from guests is a problem, it's important to have signs that show not only what is garbage, but also what should go in the recycling bin. Currently, the only</p>

		<p>recycling-related sign says, “No Glass.” There also aren’t any signs in the employee breakroom. While employees receive recycling training, posting signs reminds them that recycling is an expectation while at work.</p>
2		<p>Purchase unbleached, post-consumer recycled paper and other paper products. 5 POINTS</p> <p>Toilet paper is Green Seal certified – good!</p> <p>Office paper does not contain recycled content. Staples sell recycled-content paper. A good place to start is to look for paper containing 30% recycled-content.</p> <p>Staples 30% Recycled Copy Paper, 8 1/2" x 11", Case</p> <div><div><div>Item: 492072 Model: 112350/461757 ★★★★★ (220) Write a Review</div><div></div></div><div><div><div><div>Delivery</div><div><div>\$53.99</div><div>5,000/Case</div></div><div><div>1</div><div>▲</div><div>ADD TO CART</div></div><div><div>Expected By:</div><div>Wednesday, January 11</div><div>This Item Ships Free</div></div></div><div><div>1-Hour Pick Up</div><div><div>(save an extra 5%)</div><div>\$51.29</div></div><div><div>None Available at:</div><div>870 South Colorado Blvd.,</div><div>Glendale, CO 80246</div><div>Check Other Stores</div></div></div><div><div>Auto Restock</div><div><div>(save an extra 5%)</div><div>\$51.29</div></div><div><div>Automatically receive deliveries on</div><div>the schedule you set. Learn More</div></div></div></div><div><div>Product Details</div><div><ul style="list-style-type: none">• 8.5" x 11"• 20-pound weight provides strength and durability• 92 U.S. and 104 Euro brightness for high-contrast printing</div></div><div><div>• Special Financing Available</div><div>• Free Pick Up In Store</div><div>• ShopRunner Eligible learn more sign in</div></div></div><p>Coffee filters are bleached, but Bunn claims it uses a chlorine-free bleaching process. Nevertheless, a good idea to look for unbleached coffee filters that contain recycled content or to purchase a permanent (reusable) filter. More information below.</p></div>
0		<p>Use non-toxic and environmentally friendly cleaning supplies. 3 POINTS (10 POINTS for cleaning companies)</p> <p>Conventional cleaners are used for light-duty office cleaning. Simple Green might have green in the name, but the color is the only green thing about it. Look for people and planet friendlier cleaners from your distributor; Staples carries its own line third-party certified products. For example, instead of using Simple Green, use Staples’ Sustainable Earth Multi-Purpose spray. You can purchase already diluted or in a concentrate form.</p> <div><div><div>Item: 919507 Model: SEB64033RTU ★★★★★ Be the first to Write a Review</div><div></div></div><div><div><div><div>Delivery</div><div><div>\$39.99</div><div>12/Carton</div></div><div><div>1</div><div>▲</div><div>ADD TO CART</div></div><div><div>Expected By:</div><div>Wednesday, January 11</div></div></div><div><div>Not Sold in Stores</div></div><div><div>Auto Restock</div><div><div>(save an extra 5%)</div><div>\$37.99</div></div><div><div>Automatically receive deliveries on</div><div>the schedule you set. Learn More</div></div></div></div><div><div>Product Details</div><div><ul style="list-style-type: none">• Liquid all purpose cleaner spray• Cleans water-washable surfaces: floors, walls, countertops, desks, cabinets, glass, porcelain Neutral PH and Ammonia and phosphate free• Safer for you and the environment</div><div>View Full Product Details</div></div><div><div>• Special Financing Available</div><div>• Free Pick Up In Store</div></div></div><p>Find out what types of products are used by The Key People, and ask them to switch if necessary.</p><p>Regardless of which brand you prefer, always look for third-party certifications when you purchase cleaning products. These certifications ensure that products have been evaluated for minimal environmental and human health impact. More information below:</p></div>

	<p>There are four generally accepted third party certifications. Green Seal, Eco Logo, Safer Choice (EPA), and USDA BioPreferred.</p> <p>Green seal has developed life cycle-based sustainability standards for products, services and companies and offer third-party certification for those that meet the criteria in the standard. http://www.greenseal.org/FindGreenSealProductsAndServices.aspx</p> <p>Eco Logo ensures only the top 20% of products on the shelf can be certified. http://www.environmentalchoice.com/en/</p> <p>EPA's Safer Choice (formerly known as EPA Design for the Environment): https://www.epa.gov/saferchoice</p> <p>USDA's BioPreferred – designed to promote bio-based products and reduce the use of petroleum-based ingredients.: https://www.biopREFERRED.gov/BioPreferred/faces/Welcome.xhtml</p>										
2	<p>Examine purchasing policies for environmental impact. Purchase reusable, recyclable or compostable products such as dishes, utensils and hand towels. 5 POINTS</p> <p>Employees receive free mugs and can get free drinks if they bring their mugs to work. There is a dishwasher in the kitchen for kitchen-use, but not for employee's own dishes. And even though there is a dishwasher, guest food is served on disposable plates. Right now, the Day Lodge is going through leftover compostable cold and hot cups. It also provides plastic stirrers and plastic cutlery which is not compostable/contains no recycled content. There is no water in the employee breakroom. While employees are responsible for their own utensils, cups, and plates, there are disposable items available to them in the breakroom. These structural issues pose challenges to using durable, reusable items in the Day Lodge. Here are a few suggestions for improvement – provide these items for guests AND staff:</p> <ol style="list-style-type: none">1. Continue to purchase either compostable and/or recycled-content cups. Purchase paper plates made out of renewable resources or recycled content. Purchase napkins with recycled content. While we can longer compost these items, it is important to purchase products made of renewable resources or recycled content – either of these choices are better than purchasing products made out of virgin paper material. <p>These plates are available from EcoProducts.com</p> <div><div></div><div><p>Item Code: EP-PW6</p><p>Fulfilled By: </p><table><tr><td>Case 1000</td><td>Pack 125</td></tr><tr><td>Price: \$83.72</td><td>Price: \$15.70</td></tr><tr><td><input type="text" value="0"/></td><td><input type="text" value="0"/></td></tr><tr><td colspan="2">+ add to cart</td></tr><tr><td colspan="2">check out now</td></tr></table></div></div>	Case 1000	Pack 125	Price: \$83.72	Price: \$15.70	<input type="text" value="0"/>	<input type="text" value="0"/>	+ add to cart		check out now	
Case 1000	Pack 125										
Price: \$83.72	Price: \$15.70										
<input type="text" value="0"/>	<input type="text" value="0"/>										
+ add to cart											
check out now											



6 inch Round Sugarcane Plate



[Click Here for Larger Image](#)

Disposable 6inch appetizer or dessert plates made from sugarcane. Stronger than traditional paper plates and made from better materials.

Item Code: EP-P016

Fulfilled By:

Case 1000
~~Price: \$71.97~~
Sale: \$64.77
Save: 10%

Pack 50
~~Price: \$6.90~~
Sale: \$6.21
Save: 10%

0

0

+ add to cart

check out now

Highlights:

Great for appetizers or desserts where a little plate goes a long way.

- 6 in. diameter with 1/2 in. rim

These are less expensive – available from Staples:

BioGreenChoice 7" Off White Compostable Fiber/Bagasse Plate, 1000/Case

Item: 20004956 Model: BGC-112 ★★★★★ (1) | [Write a Review](#)



Plate, 7", 1,000/Case

Delivery

\$59.19
1000/Carton

1 **ADD TO CART**

Expected By:
1 to 7 Business Days
This Item Ships Free

Not Sold in Stores

These napkins are available from Staples.

Marcal Small Steps 100% Recycled Paper Napkins, 1-Ply, 6/Case

Item: 698563 Model: 6506-6 ★★★★★ (16) | [Write a Review](#)



6/Case

Delivery

\$29.99
6 Packs/Case

1 **ADD TO CART**

Expected By:
Wednesday, January 11

Not Sold in Stores

Auto Restock

(save an extra 5%)

\$28.49

Automatically receive deliveries on

2. Purchased cutlery made out of renewable resources or recycled content.

3. Purchase wooden stir sticks. These can still be composted in Summit County's program.



7" Wooden Stir Sticks



7" Wooden Stir Sticks would make a great addition to your coffee shop. Skip unnecessary plastics and try Wooden Stirrers at your accessory counter. Wooden Stirrers are the better option and made from renewable resources.

Item Code: NT-ST-C10C

Fulfilled By: 

Case 10000	Pack 1000
Price: \$66.47	Price: \$9.68
Sale: \$58.92	Sale: \$8.62
Save: 10%	Save: 10%

0

Click Here for Larger Image

Highlights:
Complete your coffee bar with renewable and compostable stir sticks.

4. Purchase a reusable metal coffee filter. **Make sure you're composting your coffee grounds!**

3	<p>Minimize excess paper usage in operations: print double sided whenever possible, invoice electronically, etc. 3 POINTS (5 POINTS for doctor's offices)</p> <p>Receipts can be sent electronically. Waivers are printed at lawyer's suggestion.</p>
5	<p>Reduce the amount of mail you receive (when possible). (Requesting no-mail service involves contacting individual vendors or joining a no-mail services) 5 POINTS</p> <p>TOF has been actively trying to reduce the amount of junk mail it receives, although it still gets a lot. If you haven't already, try these steps below:</p> <p><i>The following information comes from the Federal Trade Commission:</i> The Direct Marketing Association's (DMA) Mail Preference Service (MPS) lets you opt out of receiving unsolicited commercial mail from many national companies for five years. When you register with this service, your name will be put on a "delete" file and made available to direct-mail marketers and organizations. This will reduce most of your unsolicited mail. However, your registration will not stop mailings from organizations that do not use the DMA's Mail Preference Service. To register with DMA's Mail Preference Service, go to www.dmachoice.org, or mail your request with a \$1 processing fee to:</p> <p>DMACHoice Direct Marketing Association P.O. Box 643 Carmel, NY 10512</p>
5	<p>Recycle hard-to-recycle items: phone books, printer/toner cartridges, cell phones, hazardous waste, building materials and batteries. 5 POINTS (10 POINTS for car maintenance and auto body shops)</p> <p>All materials are properly recycled.</p>
0	<p>Compost food and/or yard waste. 5 POINTS (10 POINTS for restaurants)</p> <p>Composting is available, but not well used. Compost containers are available for guests, but no clear signage exists. Composting is not practiced in the kitchen – at the very least, coffee grounds should be composted.</p>

		Suggestion for improvement: Figure out where the majority of the Day Lodge's food waste is generated, and concentrate on composting in that ONE location only.
--	--	---

Renewable Energy		
0		Install renewable energy system, or purchase share in local solar garden. 15 points reflects full offset of energy usage. 5 points is given for ANY offset by renewable energy, an additional 1-10 points given as a percentage of total offset. Example: 20% of total energy use offset = 7 points total; 5 minimum point allotment plus 2 for 20%. 15 POINTS Would be great to add solar!
Audits		
5		Technical Energy Audit: An energy audit has been prepared by a qualified professional. The audit examines heating and lighting use in the existing business and makes recommendations on improvements that reduce energy consumption. 5 POINTS
5		Sustainability Audit: A sustainability audit has been prepared by a qualified professional. The audit examines waste reduction, water conservation, transportation, and other business practices and makes recommendations on sustainable measures that can be implemented to enhance conservation efforts while improving the business bottom line. 5 POINTS
83		Points Total (Out of 130)

Energy Assessment Report

Provided by High Country Conservation Center



Frisco Day Lodge
621 Recreation Way
Frisco, CO

Services Completed

Frisco Clean Tracks Commercial Energy Assessment

BUSINESS ENERGY ASSESSMENT



An Energy Audit will give you as a business owner an independent, third party perspective on how your building is performing and where to best spend money on efficiency upgrades. In addition to efficiency these upgrades will improve comfort, property value and the marketability of the building. HCCC uses the fees collected from your audit to further pursue our conservation mission in our mountain community. Another great way to invest in your business and home town!

The Recharge Colorado website states that the average energy (natural gas and electricity combined) costs for a healthcare business is \$2.51 per square foot. Please remember that an average building is not energy efficient. Follow the link below for small business energy tips from the Governor's Energy Office.

http://rechargecolorado.org/index.php/commercial_and_public/small_business_resource/

We appreciate that you chose [High Country Conservation Center](#) to help you with your business's comfort, energy efficiency and safety. When approaching energy saving opportunities for a building of this scale it makes sense to target the most cost-effective issues first, then over time target the larger ticket items. It's important to keep in mind that energy improvements can take place over years or even decades. Whenever building improvements are made you should look for the energy improvement opportunities within that upgrade. This report will map out this process and detail those improvements.

Sincerely,

Cody Jensen

Energy Programs Manager

Certified Building Analyst Professional

Building Performance Institute (BPI)

cody@highcountryconservation.org

BUSINESS ENERGY ASSESSMENT



Top Priorities

Heating Fuel Priorities

1. Targeted Air-Sealing
2. Add wall insulation to cold spots

Electrical Priorities

1. Replace Lighting with LED Fixtures/bulbs

** Please see the appropriate section of the report for details on the recommended improvements.*

(These contractors are local and have been certified as Building Analysts by the Building Performance Institute)

Comfort by Kodiak

Dave Koons

Retrofit Contracting

970-468-2446

About Saving Heat

Dennis Brachfeld

Retrofit Contracting

970-485-5634

Energy Smart

Mark Anderson

Retrofit Contracting

970-485-3327

Deeper Green Consulting

Matt Wright

Retrofit Contracting

970-389-2448

Innovative Energy

Eric Westerhoff

PV Solar Contracting

970-453-5384

Peak Building Services

Tony Huggins

Lighting Contractor

970-406-8452

EpicStar LED

Scott Klohs

Lighting Contractor

720-244-2001

A list of other local contractors can be found on Governor's Energy Office website www.rechargecolorado.com as well as Xcel Energy's website http://hvaceducation.net/xcel-co/public_search.cfm

** HC3 does not guarantee the contractors' expertise or reputation; do not warrant any of the products or services installed. HC3 shall have no liability for contractors' work or negligence.*

Heating Fuel Priorities

-Air leaks

In Summit County's climate zone, air leakage may account for up to 40% of your overall heating costs.

When performing air-sealing work on your business, we strongly recommend working with a contractor who will use a blower door to direct their air-sealing efforts. Without using a blower door, the contractor will not know whether they achieve your air leakage reduction goals. Be sure to discuss these goals before work begins.

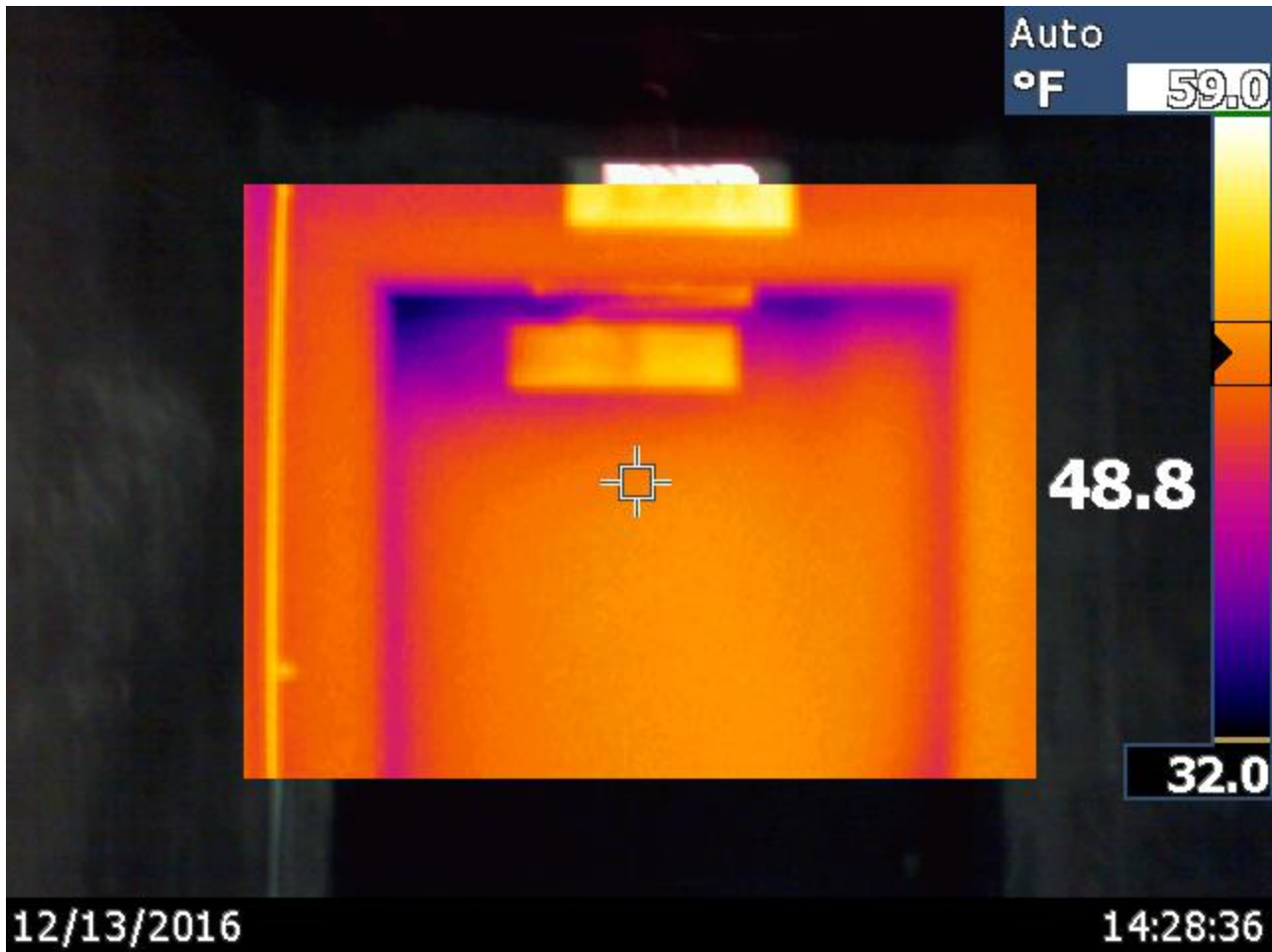
AIR LEAKAGE	
Condition	<p>Significant air leaks were: wall penetrations, door weather stripping, door sweeps.</p> <p>Other air leaks may include: bath vents, outlets / switches, baseboards, light fixtures, window trim, and wall top plates</p>
Improvements	<p>Air-sealing improvements are some of the most cost effective ones you can perform. Even the smallest of air-leaks can add up to create an uncomfortable and energy inefficient work space. We recommend having your contractor:</p> <ul style="list-style-type: none"> <input type="checkbox"/> Plug gaps around pipes, ducts and wiring that go through walls, ceilings and floors with expanding foam. <input type="checkbox"/> Caulk around window and door trim. <input type="checkbox"/> Add weather stripping to doors. <input type="checkbox"/> Seal all framing connections above foundation wall with expanding foam. <input type="checkbox"/> Insert foam gaskets behind the outlets and install childproof plugs. <p>*NOTE: cellulose and fiberglass insulation <u>do not</u> significantly reduce air leakage in attics!</p> <p>For gaps ¼" or less, use caulk. For larger gaps, use spray foam.</p> <p>It is important to perform a radon test before and after sealing leaks in your house to ensure that you are aware of unsafe radon levels, and can take action if needed. Air sealing includes caulking, using expandable foam and weather-stripping inside the thermal envelope including: doors, windows, plumbing and electrical penetrations, outlets covers, gaps, and dry wall cracks.</p> <p>It is important to perform a radon test before and after sealing leaks in your house to ensure that you are aware of unsafe radon levels, and can take action if needed.</p> <p><i>Build Tight and Ventilate Right.</i></p> <p>If improvements bring your air leakage to less than 35%, we recommend a mechanical ventilation system to improve indoor air quality. One relatively inexpensive ventilation option is to replace one or more bath fans with low-power, high quality fans that run continuously or on a timer (some use as little as 11 watts). You may also consider a heat recovery ventilator (HRV) to bring in fresh air and exhaust stale air while retaining most of the warmth or coolness from your business.</p>

BUSINESS ENERGY ASSESSMENT

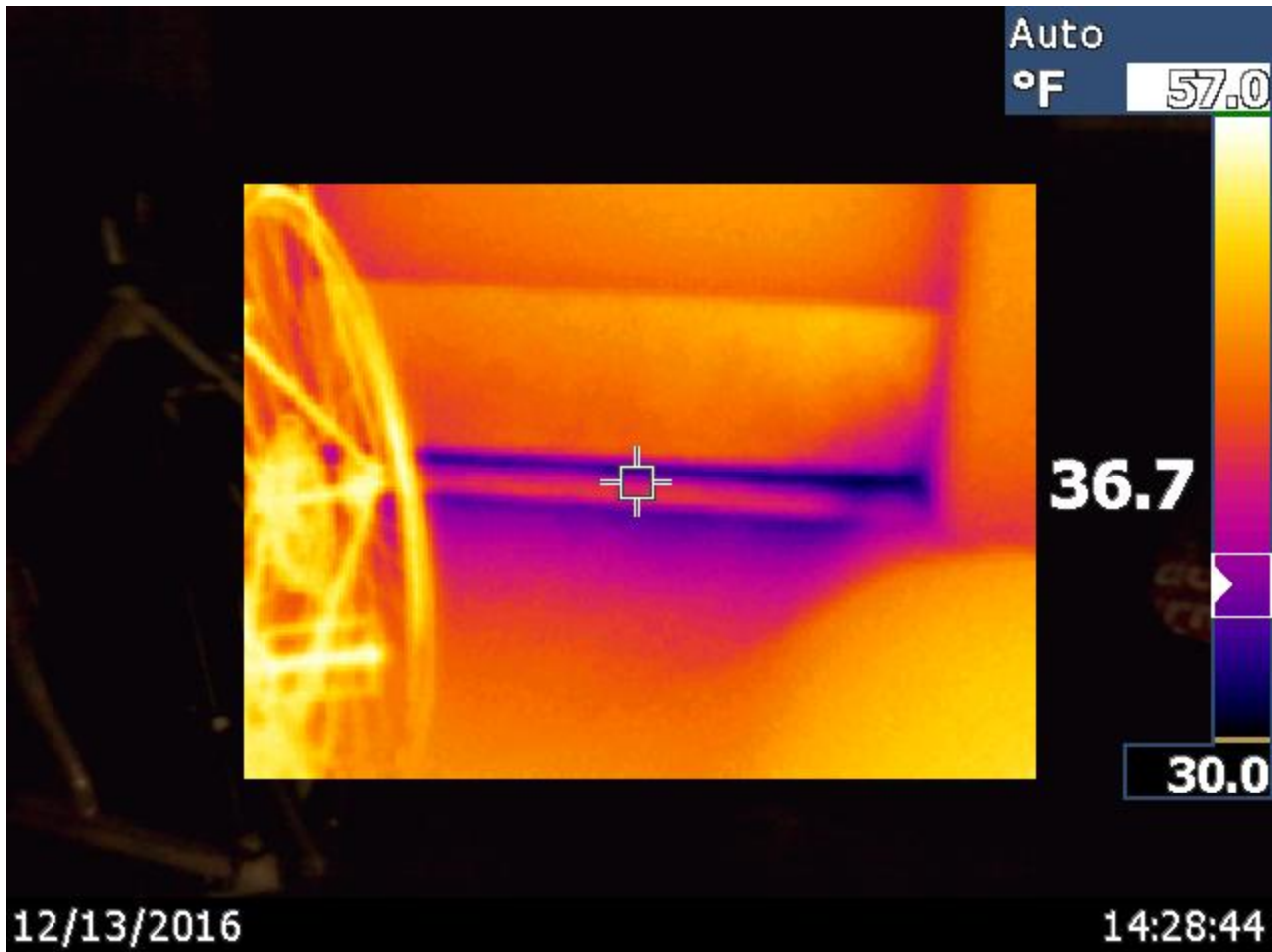


The Following Infrared images depict where cold air (indicated in blue/purple) is entering directly into your space. The modern construction of the day lodge lends itself to lower levels of air leakage. Trouble areas are largely relegated to the exterior doors throughout the property. These doors are often swinging open in heavy winds and form a poor air seal when closed. Improve the weather stripping around these doors and at the sweep.

BUSINESS ENERGY ASSESSMENT



BUSINESS ENERGY ASSESSMENT





BUSINESS ENERGY ASSESSMENT





BUSINESS ENERGY ASSESSMENT





BUSINESS ENERGY ASSESSMENT



BUSINESS ENERGY ASSESSMENT



BUSINESS ENERGY ASSESSMENT



BUSINESS ENERGY ASSESSMENT







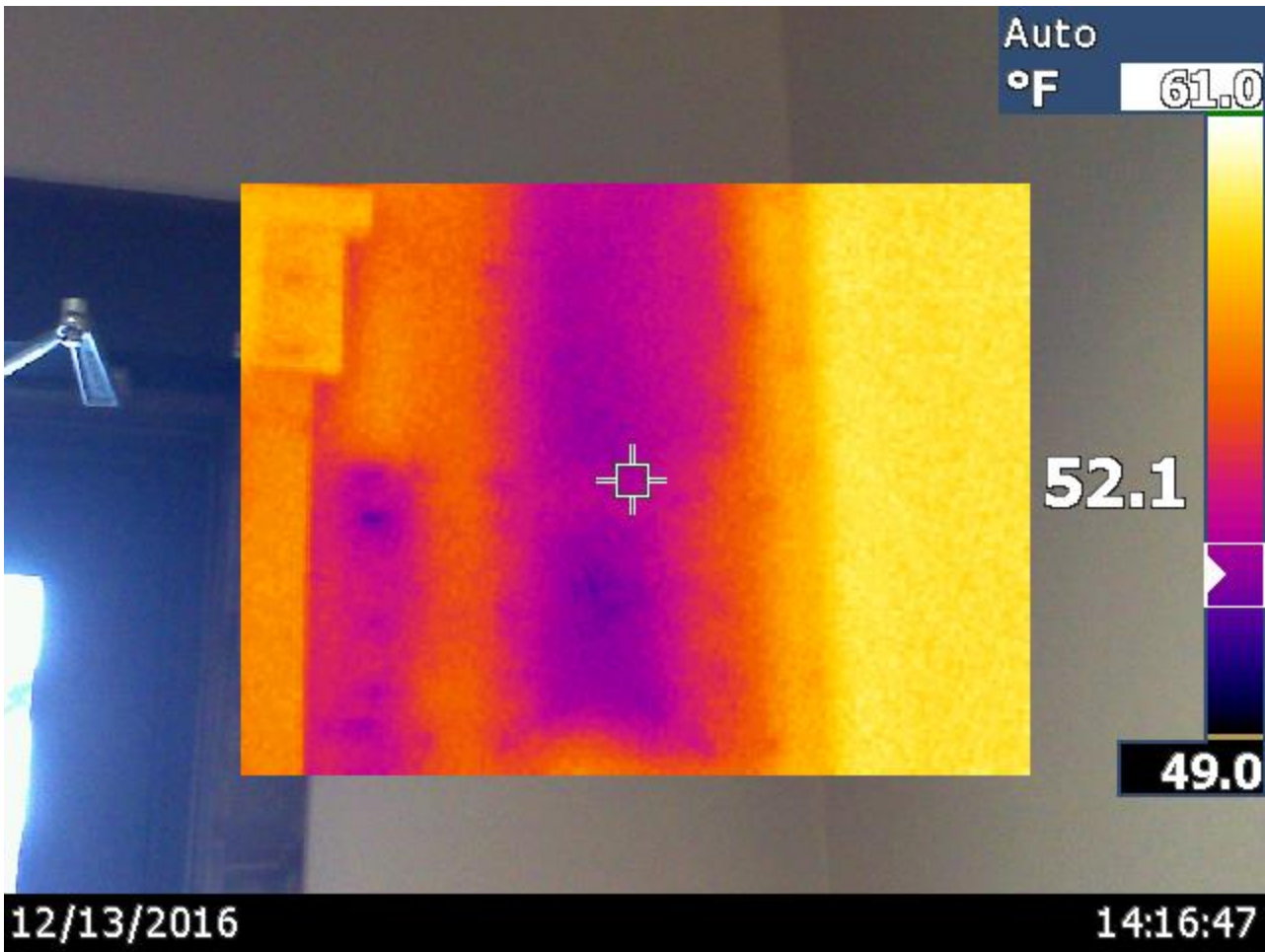
BUSINESS ENERGY ASSESSMENT

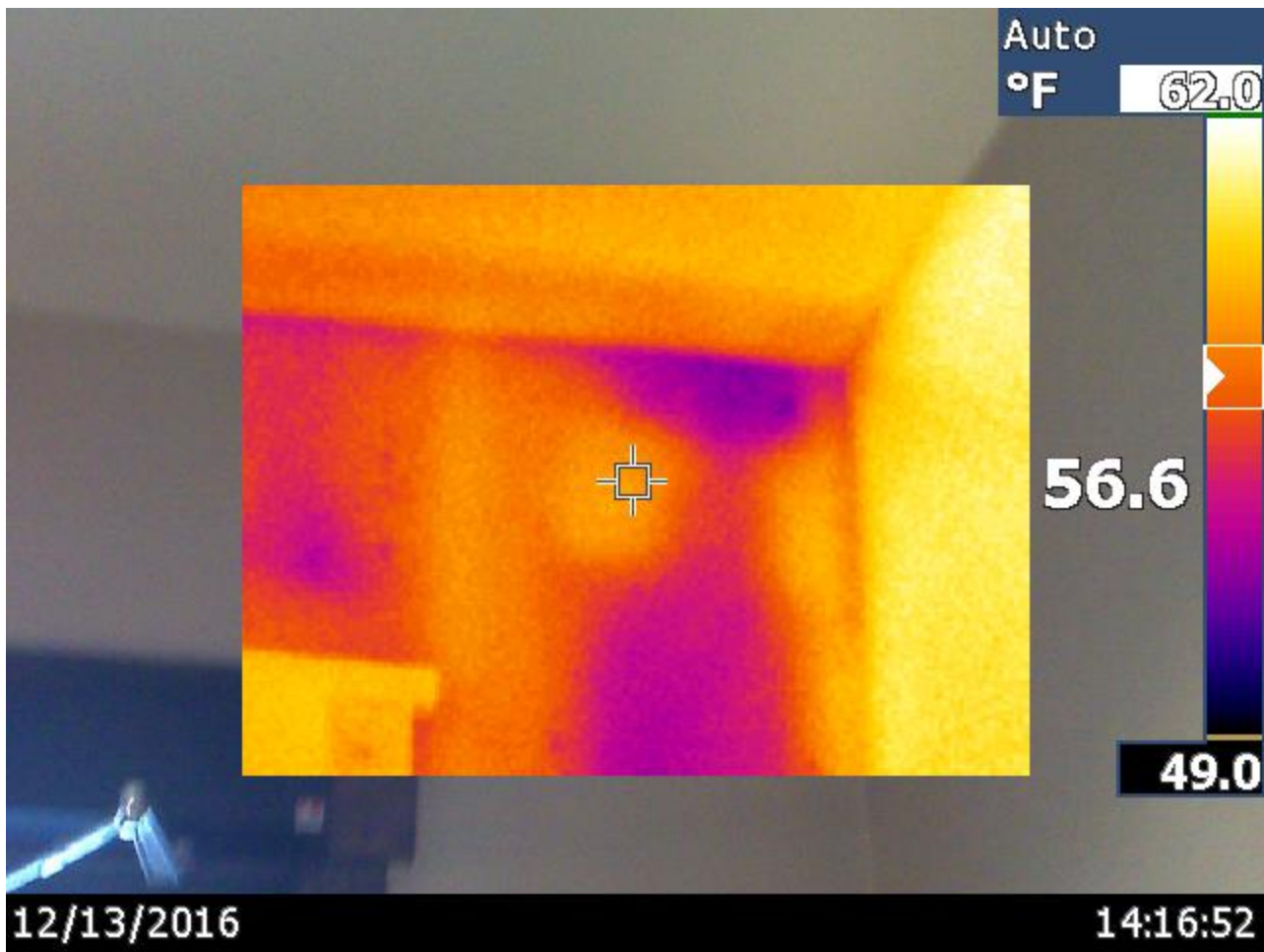


-Upgrade Lighting to LED Fixtures/Bulbs

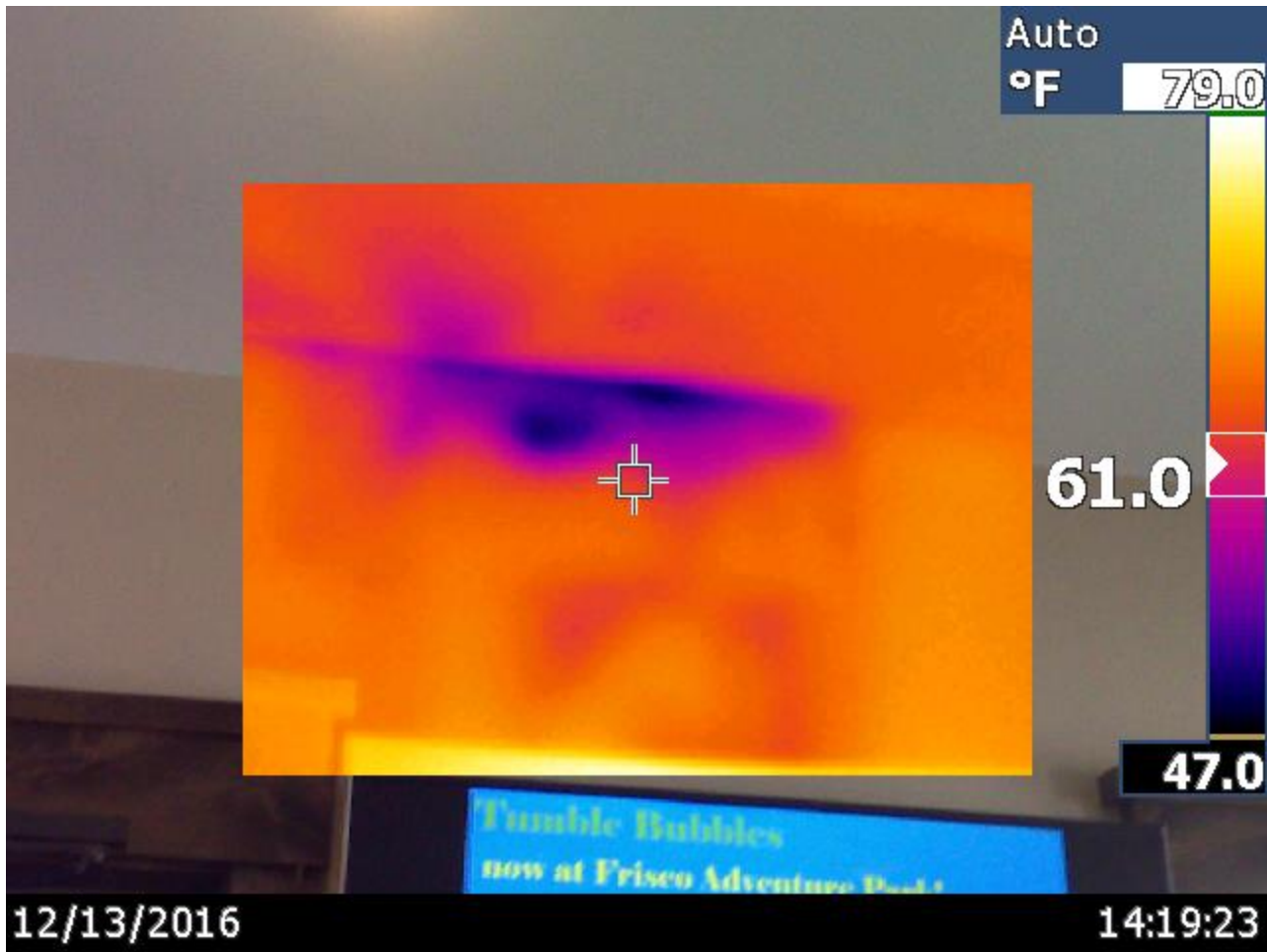
Replace incandescent light bulbs Improve in-wall insulation in the areas pictured below. Install polyurethane expanding spray foam or blown-in-blanket (BIB) insulation to fill the wall cavity in these areas.

BUSINESS ENERGY ASSESSMENT

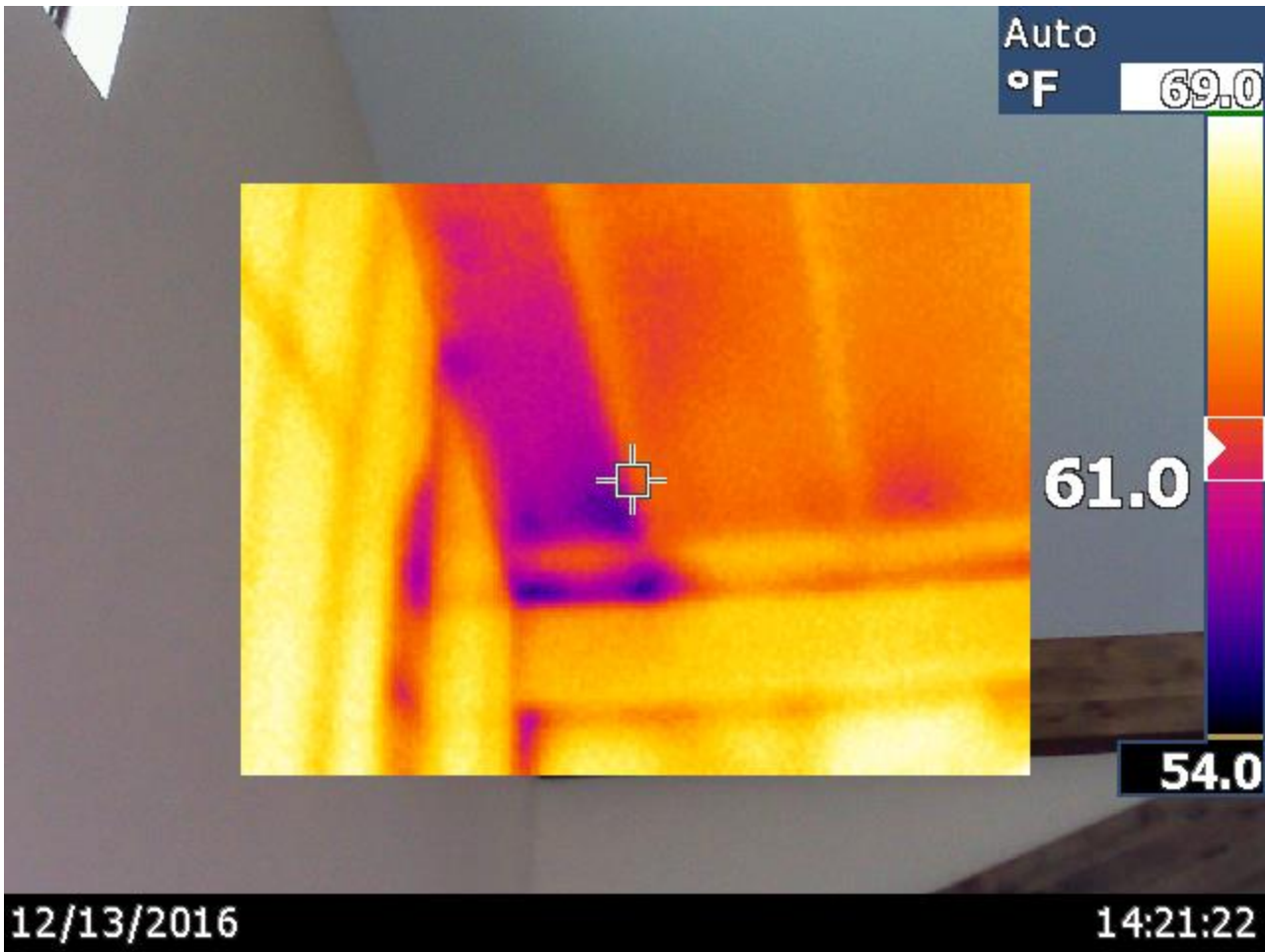




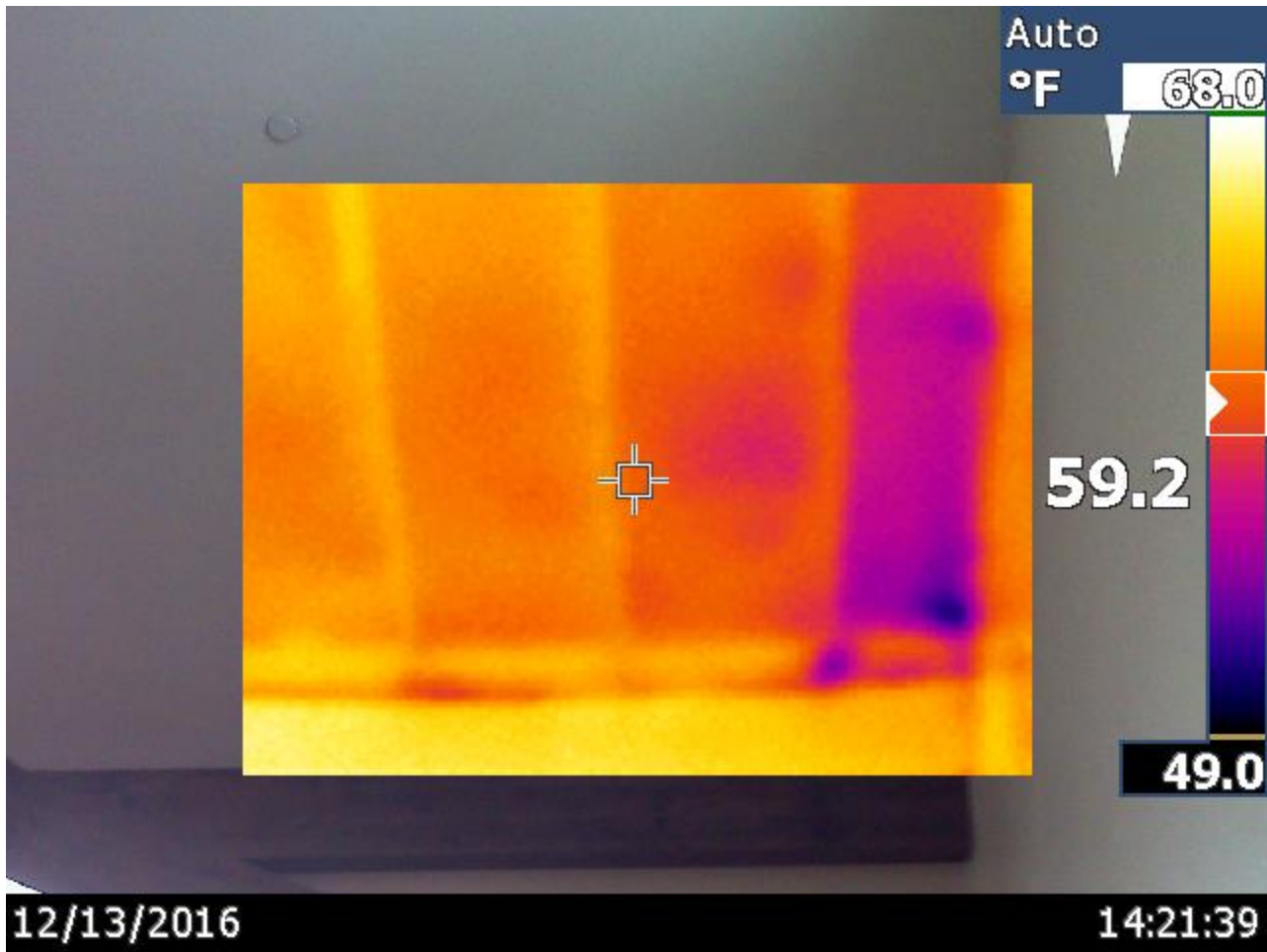
BUSINESS ENERGY ASSESSMENT



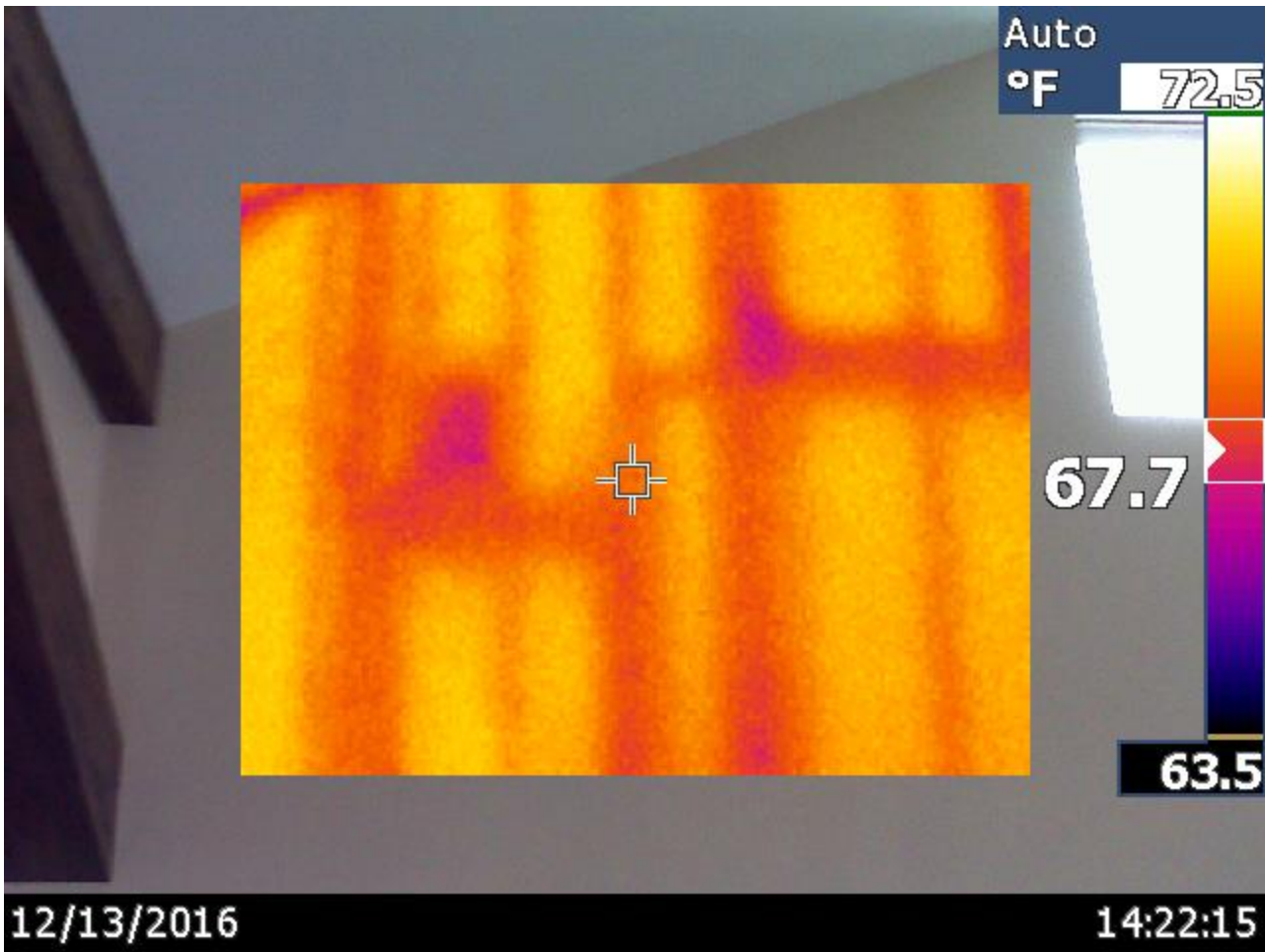
BUSINESS ENERGY ASSESSMENT



BUSINESS ENERGY ASSESSMENT



BUSINESS ENERGY ASSESSMENT





Electrical Priorities

-Upgrade Lighting to LED Fixtures/Bulbs

Replace incandescent light bulbs, fluorescent tubes, and even compact fluorescent light bulbs (CFLs) with modern LED lighting technology. LED lighting is far more efficient than the aforementioned lighting options. Additionally, LED lighting lasts longer than its counterparts and produces more stable light. For these reasons, LED lighting improvements often yield maintenance and staffing cost savings in addition to the direct energy use reduction savings. Coupled with powerful rebate incentives offered through local channels and Xcel Energy, LED lighting has become a cost-effective improvement any business should explore pursuing. Give HC3 a call to discuss next steps for a lighting upgrade at your business.

CleaResult may be able to offer free LED upgrades for the track lighting throughout your business. As for the fluorescent tube fixtures in the shop section of the business, we recommend replacing both the fixture and the tubes to modern LED lighting technology. Xcel energy can offer rebates for these retrofits as well. Contact HC3 to connect with one of our local lighting contractors.











