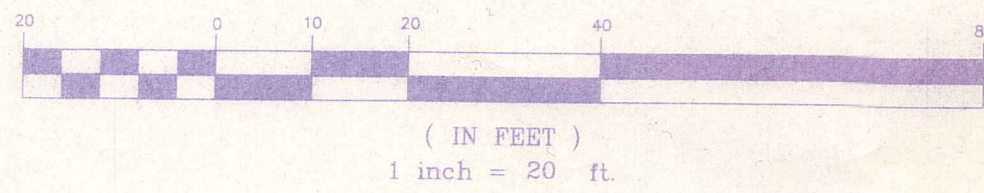


A TOPOGRAPHIC MAP OF  
**FRISCO MAINTENANCE FACILITY**  
 TOWN OF FRISCO, SUMMIT COUNTY, COLORADO

GRAPHIC SCALE



DATE OF FIELD SURVEY: DECEMBER 2005  
 SURVEY CONDUCTED IN SEVERAL FEET OF SNOW AND SIGNIFICANT  
 PACK SNOW IN PARKING AREA. MUCH DETAIL MAY HAVE BEEN OBTAINED.  
 CONTOUR INTERVAL=2 FEET

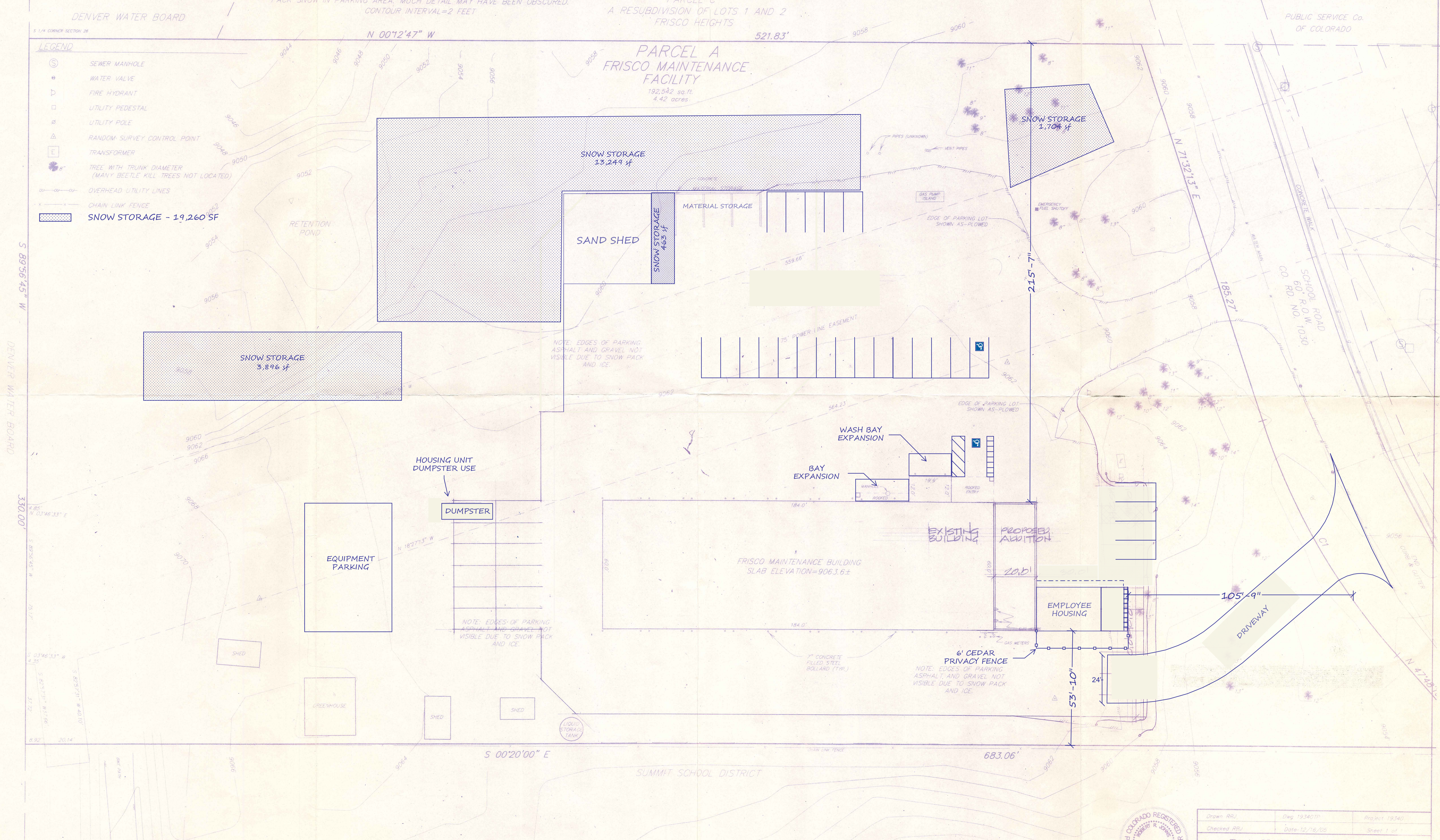
PARCEL C  
 A RESUBDIVISION OF LOTS 1 AND 2  
 FRISCO HEIGHTS

PUBLIC SERVICE Co.  
 OF COLORADO

LEGEND

- ⊙ SEWER MANHOLE
- ⊙ WATER VALVE
- ⊙ FIRE HYDRANT
- ⊙ UTILITY PEDESTAL
- ⊙ UTILITY POLE
- ⊙ RANDOM SURVEY CONTROL POINT
- ⊙ TRANSFORMER
- ⊙ TREE WITH TRUNK DIAMETER (MANY BEETLE KILL TREES NOT LOCATED)
- OVERHEAD UTILITY LINES
- CHAIN LINK FENCE
- SNOW STORAGE - 19,260 SF

PARCEL A  
 FRISCO MAINTENANCE FACILITY  
 192,542 sq. ft.  
 4.42 acres



CURVE TABLE

CURVE	RADIUS	LENGTH	TANGENT	CHORD	BEARING	DELTA
C1	308.00'	127.59'	64.72'	126.68'	N 59°40'11" E	23°44'03"



Drawn: RRI	Dwg: 193401P	Project: 19340
Checked: RRI	Date: 12/16/05	Sheet: 1 of 1
<b>RANGE-WEST</b> ENGINEERS & SURVEYORS, INC.		
P.O. Box 589 Silverthorne, CO 80498 970-468-6281		

NOTES: ACCORDING TO COLORADO LAW, NO LIABILITY OR ACTION BASED UPON ANY DEFECT IN THIS SURVEY WITHIN THREE YEARS AFTER THE DATE OF SURVEY SHALL BE HELD TO BE OPENED TO THE PUBLIC. NO OTHER LIABILITY OR ACTION BASED UPON ANY DEFECT IN THIS SURVEY SHALL BE HELD TO BE OPENED TO THE PUBLIC MORE THAN TEN YEARS FROM THE DATE OF THE CERTIFICATION SHOWN HEREON.