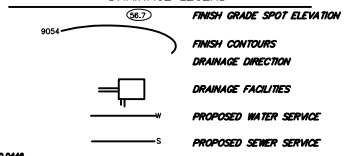
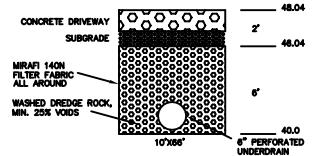


DRAINAGE LEGEND



SURVEYOR'S LEGEND

- FOUND REBAR & RED PLASTIC CAP (PLS 15242)
 - FOUND #4 REBAR
 - ⊕ explode
 - UTILITY PEDESTAL
 - △ RANDOM SURVEY CONTROL POINT
 - ⊞ TRANSFORMER
 - ⊙ 6" PINE TREE WITH TRUNK DIAMETER
 - ⊙ 8" ASPEN TREE WITH TRUNK DIAMETER
 - W — WATER MAIN
 - G — GAS MAIN
 - S — STORM SEWER MAIN
 - SS — SANITARY SEWER MAIN
 - — — EXISTING CONTOURS
 - SPOT ELEVATIONS
- NOTE: UTILITY MAINS ARE SHOWN PER TOWN OF FRISCO AS BUILTS.

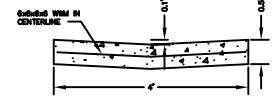


FILTRATION GALLERY

NOTE: ALL STREET GRADINGS IS TO BE CARRIED IN CURB AND GUTTER AS SURFACE RUNOFF EXTENDING CONTINUOUSLY TO THE 4TH AVENUE CURB AND GUTTER SYSTEM.

ALL SIDEWALK, CURB AND GUTTER AND WORK IN TOWN RIGHT-OF-WAY SHALL BE PER TOWN OF FRISCO PUBLIC WORKS DEPARTMENT STANDARDS AND CRITERIA AND SPECIFICATIONS.

CONCRETE TO BE MIN. 3,500 PSI, SIX SACK, AIR-ENTRAINED. INSTALL SEALED CONTROL JOINTS AT 10' SPACING.



4"x6" PAN DETAIL

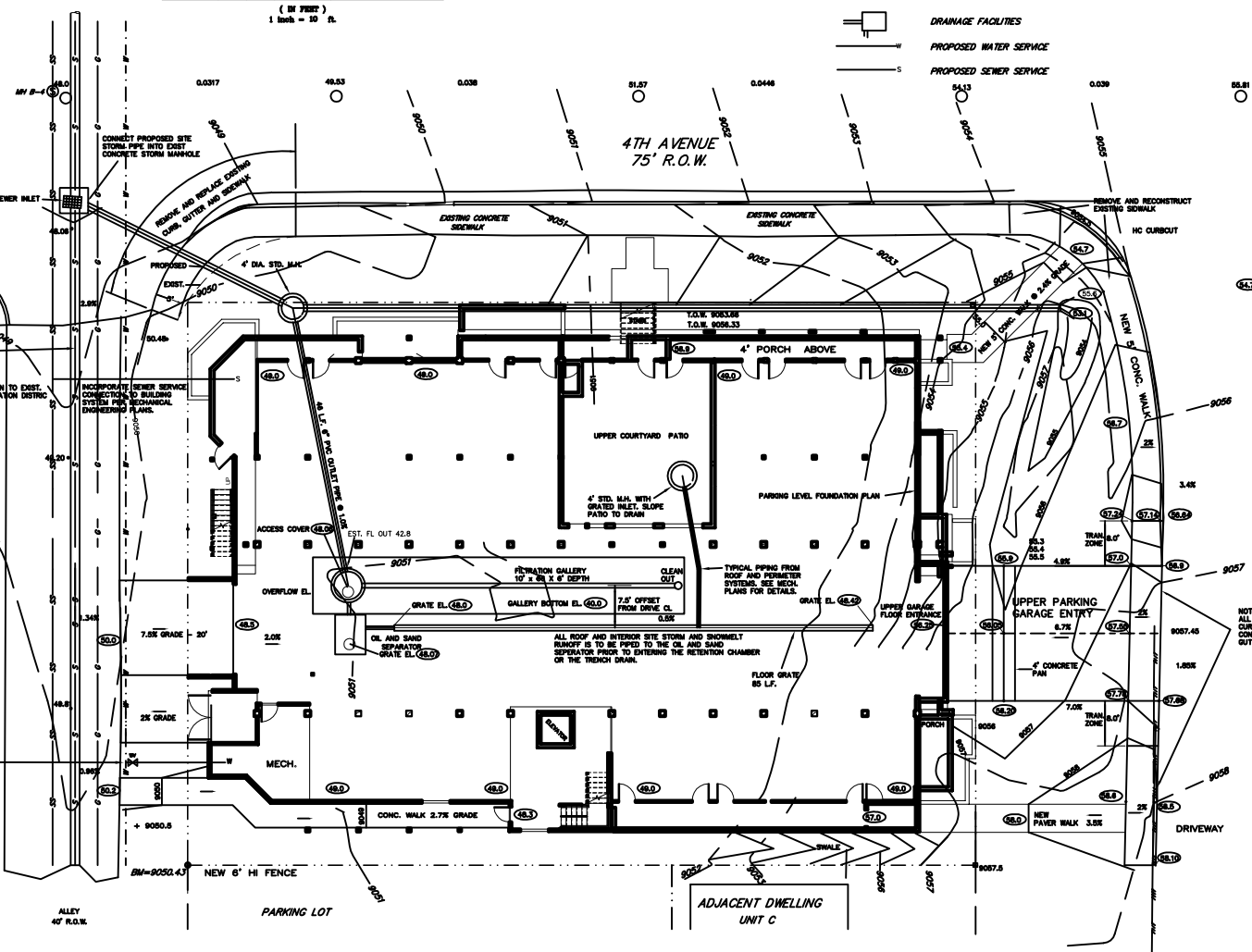
DATE OF FIELD SURVEY: 11/30/06 LAYER NUMBER: 05-03-18

GRADING & DRAINAGE PLAN

GRANITE STREET STATION

DRIVEN BY GAP	DATE 11/30/06	PROJECT LOTS 21-24, BLOCK 9, FRISCO TOWN SITE AMENDED SUMMIT COUNTY, COLORADO	SCALE 1" = 10'
FIELD DRAWN MA			SHEET C-1

P PEARSON ENGINEERING, INC.
1000 East Main Street
FRISCO, CO 80501
770.660.9071



MAKE WATER SERVICE CONNECTION TO EXISTING MAIN PER TOWN OF FRISCO PUBLIC WORKS DEPT. STANDARDS. INSTALL 4" TAPPING SLAVE AND VALVE. EXPOSE, DISCONNECT AND CAP OFF ALL EXISTING SERVICES PER STANDARDS. INCORPORATE WATER SERVICE CONNECTION TO BUILDING SYSTEM PER MECHANICAL ENGINEERING PLANS.

EXIST. 6" STORM SEWER. CONFIRM FLOW LINE ELEVATION CONTACT ENGINEER. MAKE SEWER CONNECTION TO EXIST. MAIN PER FRISCO SANITATION DISTRICT STANDARDS.

INCORPORATE SEWER SERVICE CONNECTION TO BUILDING SYSTEM PER MECHANICAL ENGINEERING PLANS.

ALL ROOF AND INTERIOR SITE STORM AND SNOWMELT RUNOFF IS TO BE PIPED TO THE OIL AND SAND SEPARATOR PRIOR TO ENTERING THE RETENTION CHAMBER OR THE TRINCH DRAIN.

LOTS 6-7
HOTEL FRISCO

STORM SEWER PROFILE

