



LEGEND

---	L-PAVING	---	L-MATCHLINE
---	L-EDGER	---	L-ENLARGEMENT
---	L-EDGER-SPADE	---	L-LIMIT OF WORK
---	L-WALL		
---	L-FENCE		
---	L-SWALE		
---	L-MOWLINE		

[Pattern]	ANNUALS	[Pattern]	SOD
[Pattern]	PERENNIALS	[Pattern]	COBBLE
[Pattern]	SOD	[Pattern]	CRUSHER FINES
[Pattern]	PLANTING BEDS	[Pattern]	IMPROVEMENTS BY OTHERS

NOTES

- THESE PLANS SHALL NOT BE UTILIZED FOR CONSTRUCTION OR PERMITTING UNLESS STATED FOR SUCH USE IN THE TITLE BLOCK.
- ALL DISTURBED AREAS SHALL BE REVEGETATED USING A SHORT DRY NATIVE GRASS MIX.
- EROSION CONTROL BLANKETS SHALL BE USED ON DISTURBED SLOPES STEEPER THAN 3:1. REFERENCE ENGINEER PLANS FOR EROSION CONTROL IN R.O.W. SWALES.
- ALL TREES, SHRUBS, AND PERENNIALS SHALL BE IRRIGATED. ALL TREES AND SHRUBS TO BE DRIP IRRIGATED.
- PLANT SYMBOLS ARE SHOWN AT APPROXIMATELY MATURE SIZE.
- ALL PLANT SYMBOLS SHOWN IN SNOW STORAGE AREAS SHALL BE PLANTS TOLERANT OF SNOW LOAD.
- ALL PLANTINGS SHALL BE PLANTED TO AVOID CONFLICTS WITH SIGHT TRIANGLES AND EXISTING AND PROPOSED UTILITIES. NOTIFY LANDSCAPE ARCHITECT OF CONFLICTS.
- FINAL PLANT LOCATION SHALL BE FIELD VERIFIED.
- ALL EXISTING TREES TO REMAIN SHALL BE PROTECTED. REFERENCE TREE AND SHRUB PROTECTION DETAIL.
- TREES PLANTED IN GROUPS OF THREE OR MORE SHALL BE A VARIETY OF SIZES TO MIMIC NATURAL TREE STANDS.
- NO DISTURBANCE SHALL OCCUR WITHIN WETLAND SETBACKS.

SCHEMATIC PLANT LIST

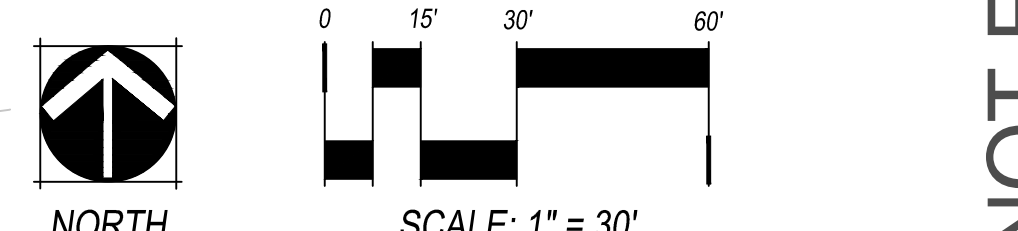
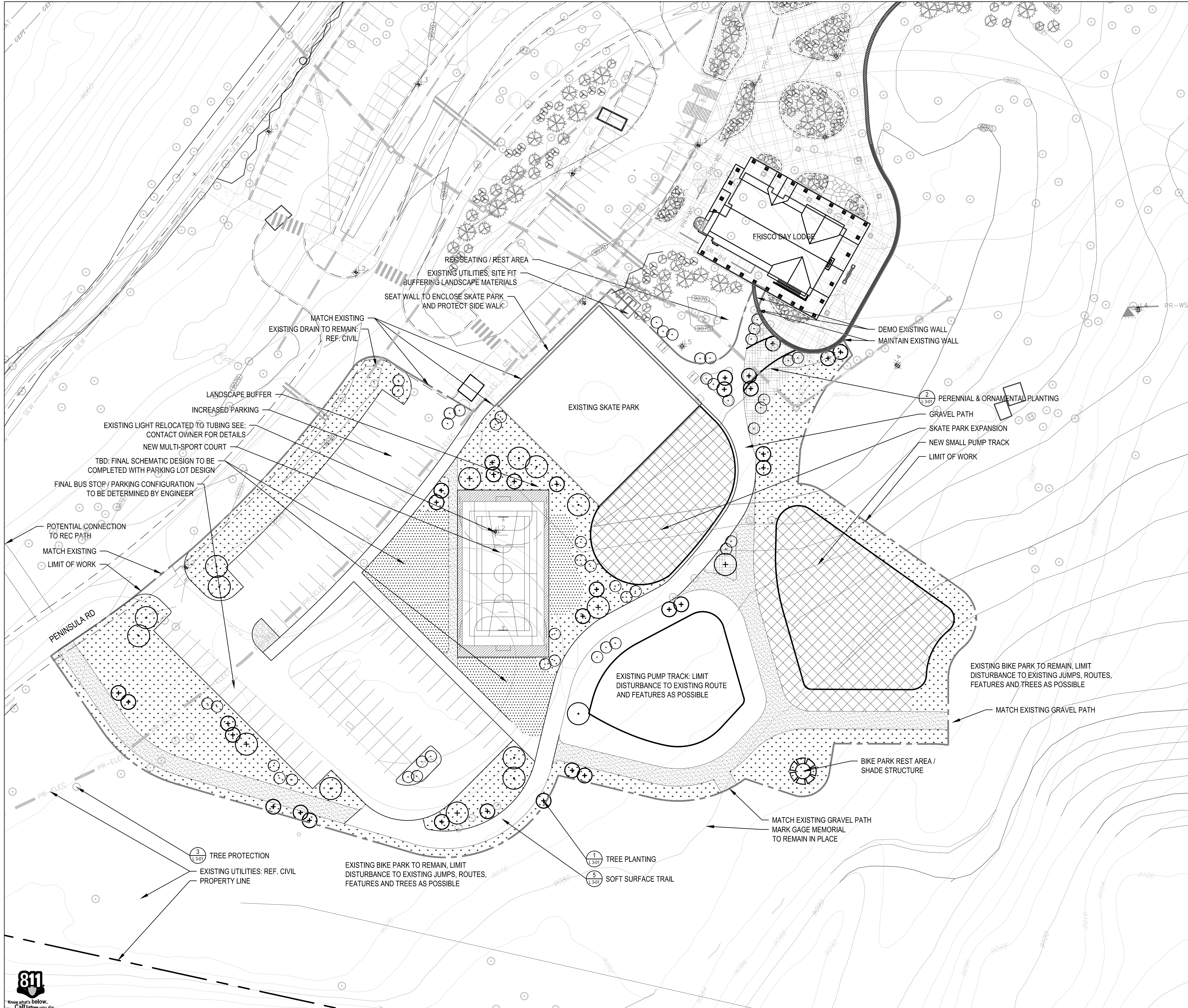
DECIDUOUS TREES	
QUAKING ASPEN 'SPRING SNOW' CRABAPPLE	POPULUS TREMULOIDES MALUS 'SPRING SNOW'
EVERGREEN TREES	
COLORADO BLUE SPRUCE BRISTLECONE PINE	PICEA PUNGENS 'GLAUCA' PINUS ARISTATA
SHRUBS	
YELLOW MOUNTAIN WILLOW RED BERRY ELDER PEKING COTONEASTER	SALIX MONTICOLA SAMBUCUS RACEMOSA COTONEASTER ACUTIFOLIA
PERENNIALS	
PURPLE CONEFLOWER DAYLILY SPIKED SPEEDWELL YELLOW ICE PLANT SALVIA	ECHINACEA MAGNUS HEMEROCALLIS VERONICA SPICATA DELOSPERMA NUBIGENU SALVIA x SYLVESTRIS

SCHEMATIC REVEGETATION MIX

COMMON NAME	BOTANICAL NAME
SLENDER WHEATGRASS	ELYMUS TRACHYCAULUS
BLUEBUNCH WHEATGRASS	PSEUDOROEGNERIA SPICATA
SANDBERG BLUEGRASS	POA SECUNDA
INDIAN RICEGRASS	ORYZOPSIS HYMENOIDES
IDAHO FESCUE	FESTUCA IDAHOENSIS
WESTERN WHEATGRASS	PASCOPYRUM SMITHII
BLUE WILDRIE	ELYMUS GLAUCUS
ROCKY MOUNTAIN FESCUE	FESTUCA SAXIMONTANA
TUFTED HAIRGRASS	DESCHAMPSIA CESPITOSA
CANBY BLUEGRASS	POA SECUNDA 'CANBAR'

NOTES

- SEED APPLICATION RATES
 - BROADCAST: 20-25 LBS/ACRE
 - DRILLED: 15-20 LBS/ARCE
- APPLY EROSION CONTROL NETTING TO ANY AREA WHICH IS VULNERABLE TO SOIL EROSION SUCH AS SWALES OR STEEP SLOPES (3:1 OR STEEPER)
- UTILIZE HYDROMULCH AND TACKIFIER OF 2,000 POUNDS PER ACRE WITH 3% TACKIFIER.
- UNLESS NOTED OTHERWISE IN TECHNICAL SPECIFICATIONS, AMEND ALL TOPSOIL IN RESEED AREAS TO 2" DEPTH WITH COMPOST.



CHECKED BY:
 DRAWN BY:
 AR



NOT FOR CONSTRUCTION