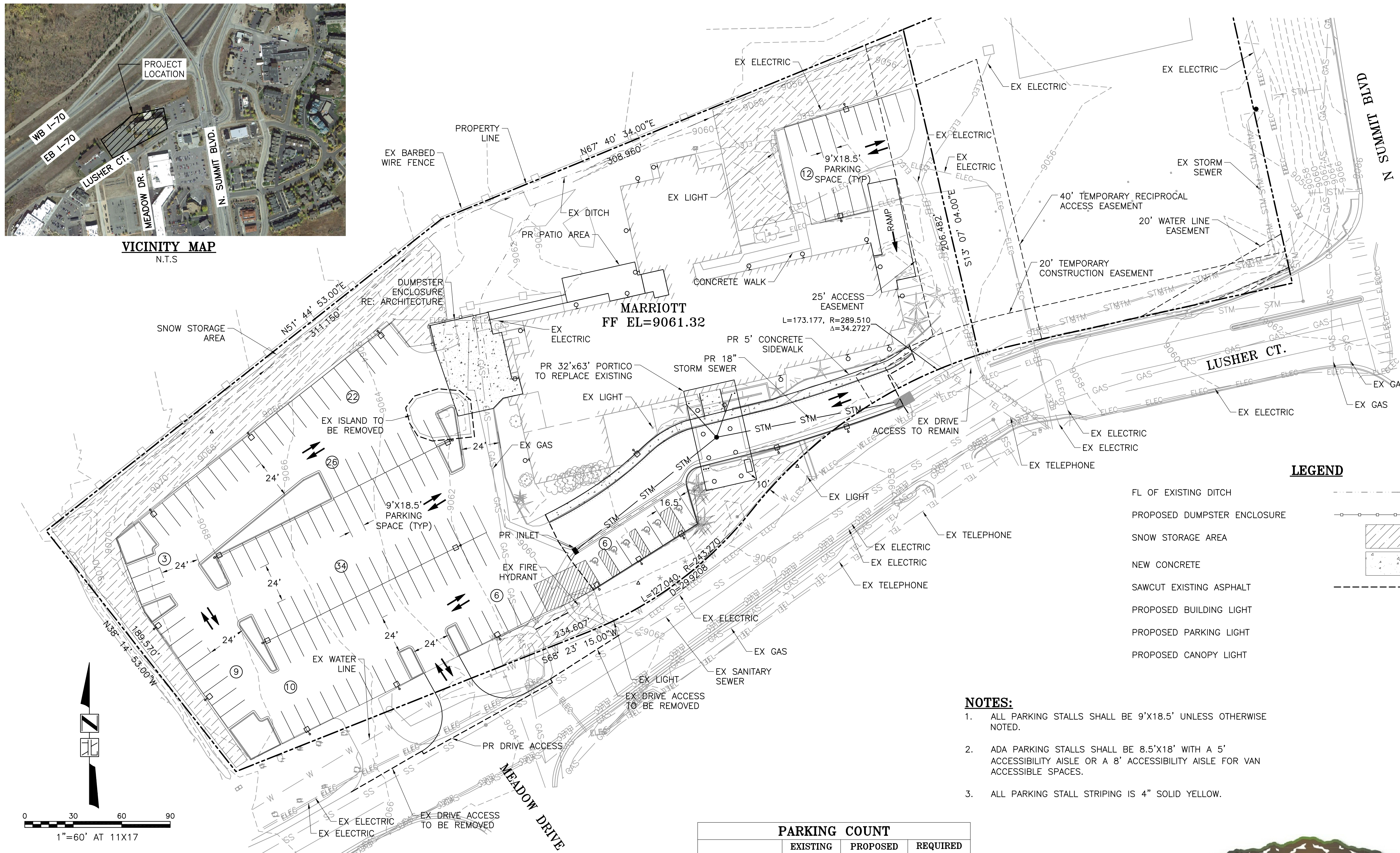




VICINITY MAP
N.T.S.



LEGEND

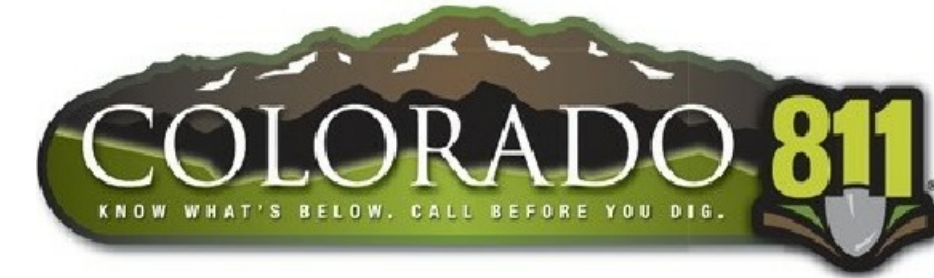
- FL OF EXISTING DITCH
- PROPOSED DUMPSTER ENCLOSURE
- SNOW STORAGE AREA
- NEW CONCRETE
- SAWCUT EXISTING ASPHALT
- PROPOSED BUILDING LIGHT
- PROPOSED PARKING LIGHT
- PROPOSED CANOPY LIGHT

NOTES:

1. ALL PARKING STALLS SHALL BE 9'X18.5' UNLESS OTHERWISE NOTED.
2. ADA PARKING STALLS SHALL BE 8.5'X18' WITH A 5' ACCESSIBILITY AISLE OR A 8' ACCESSIBILITY AISLE FOR VAN ACCESSIBLE SPACES.
3. ALL PARKING STALL STRIPING IS 4" SOLID YELLOW.

PARKING COUNT			
	EXISTING	PROPOSED	REQUIRED
PARKING SPACES	111	122	127
ADA SPACES	5	6	
TOTAL	116	128	127

LAND USE SUMMARY					
CONDITION	TOTAL LOT AREA (SF)	COVERED AREA (SF)	NON-COVERED AREA (SF)	PAVEMENT AREA (SF)	SNOW STORAGE (SF)
EXISTING	130,171	85,460 (66%)	44,711 (34%)	62,037 (48%)	19,200 (15%)
PROPOSED	130,171	84,592 (65%)	45,579 (35%)	60,561 (46%)	19,276 (15%)



CALL 811 2 BUSINESS DAYS PRIOR TO DIGGING, GRADING OR EXCAVATING FOR MARKING OF UNDERGROUND MEMBER UTILITIES.

JFSA ASSUMES NO RESPONSIBILITY FOR UTILITY LOCATIONS. THE UTILITIES SHOWN ON THIS DRAWING HAVE BEEN PLOTTED FROM (PROVIDED) ASCE (38) UTILITY QUALITY LEVEL D (Q_uD) AVAILABLE INFORMATION. IT IS, HOWEVER, THE CONTRACTOR'S RESPONSIBILITY TO FIELD VERIFY THE SIZE, MATERIAL, HORIZONTAL AND VERTICAL LOCATION OF ALL UTILITIES (DEPICTED OR NOT DEPICTED) PRIOR TO THE COMMENCEMENT OF ANY CONSTRUCTION.

FAIRFIELD BY MARRIOTT - HOTEL CONVERSION

1202 SUMMIT BLVD
FRISCO, CO 80443

PRELIMINARY

THIS DRAWING HAS NOT BEEN APPROVED BY GOVERNING AGENCIES AND IS SUBJECT TO CHANGE

SITE DEVELOPMENT PLAN

6/14/19
DRAWN BY | KBW
CHECKED BY | LRM
REVISIONS

SITE PLAN

C1.0

FILE: C:\Civil_3D\Projects\JF1841 - Frisco Marriott\Production\JF1841_SDP.dwg
DATE: 6/14/19 DRAWN BY: KBW JOB NO.: JF1841 PLOT SCALE: AS SHOWN
LAST UPDATED BY: KBW

BENCHMARK:

THE BENCHMARK USED FOR THIS SURVEY IS A STANDARD DISK SET INTO A DRILL HOLE INTO THE TOP OF THE SOUTH ONE OF THREE CONCRETE FOUNDATIONS FOR THE LARGE SHELL SIGN, 94.5' EAST FROM THE EDGE OF OIL FOR DILLON DAM ROAD, 58.1' NORTH FROM THE NORTHWEST CORNER OF A BUILDING AT 1121 SUMMIT BOULEVARD, 10.5' NORTH FROM A WITNESS POST, 0.8' WEST FROM THE WESTERN CORNER OF THE IRON BASE OF THE SOUTHERN SIGN POST AND ABOUT 26.2' BELOW INTERSTATE 70. ELEV.=9058.09 (NAVD 88)

BASIS OF BEARING:

BEARINGS SHOWN HEREON ARE ASSUMED AND ARE BASED UPON THE NORTHWESTERLY LINE OF LOT 2A, RESUBDIVISION OF LOT 2, BLOCK A, DISCOVERY INTERCHANGE WEST WHICH BEARS N51°44'53"E BETWEEN THE MONUMENTS SHOWN HEREON.

