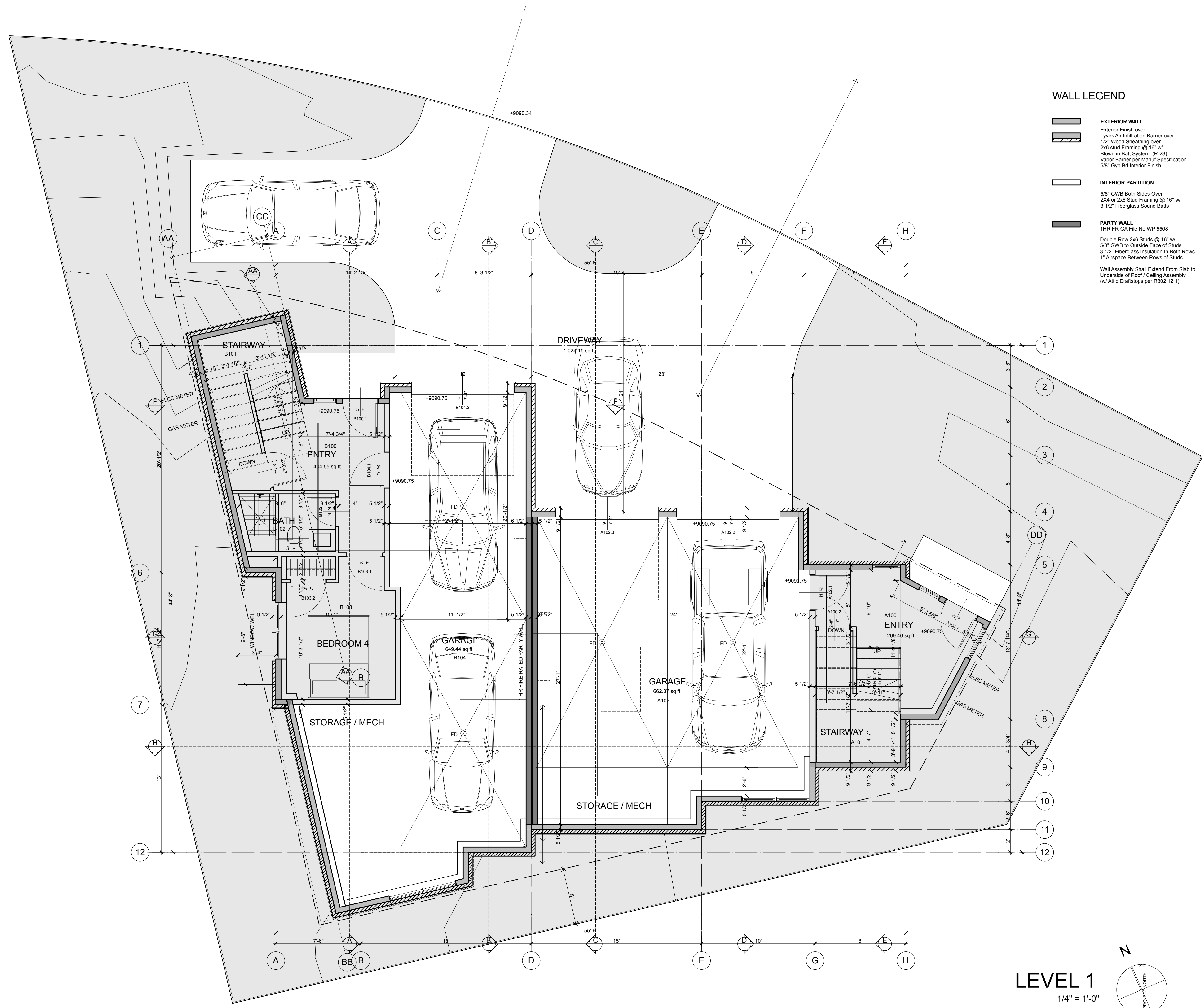
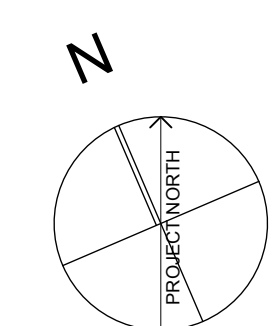


WALL LEGEND

- EXTERIOR WALL**
Exterior Finish over
Tyvek Air Infiltration Barrier over
1/2" Wood Sheathing over
2x6 stud Framing @ 16" w/
Blown in Batt System (R-23)
Vapor Barrier per Manuf Specification
5/8" Gyp Bd Interior Finish
- INTERIOR PARTITION**
5/8" GWB Both Sides Over
2x4 or 2x6 Stud Framing @ 16" w/
3 1/2" Fiberglass Sound Batts
- PARTY WALL**
1HR FR GA File No WP 5508
Double Row 2x6 Studs @ 16" w/
5/8" GWB to Outside Face of Studs
3 1/2" Fiberglass Insulation in Both Rows
1" Airspace Between Rows of Studs
Wall Assembly Shall Extend From Slab to
Underside of Roof / Ceiling Assembly
(w/ Attic Draftstops per R302.12.1)




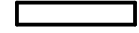

LEVEL 1
1/4" = 1'-0"



PROPOSED DUPLEX PROJECT FOR
LOT 10
THE CREEK AT FRISCO
FRISCO, COLORADO

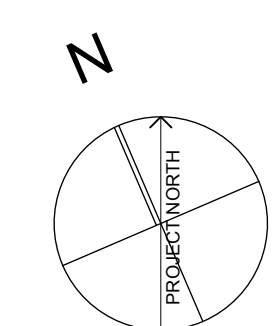
A2.1

WALL LEGEND

-  **EXTERIOR WALL**
Exterior Finish over
Tyvek Air Infiltration Barrier over
1/2" Wood Sheathing over
2x6 Stud Framing @ 16" w/
Blown in Batt System (R-23)
Vapor Barrier per Manuf Specification
5/8" Gyp Bd Interior Finish
-  **INTERIOR PARTITION**
5/8" GWB Both Sides Over
2x4 or 2x6 Stud Framing @ 16" w/
3 1/2" Fiberglass Sound Batts
-  **PARTY WALL**
1HR FR GA File No WP 5508
Double Row 2x6 Studs @ 16" w/
5/8" GWB to Outside Face of Studs
3 1/2" Fiberglass Insulation in Both Rows
1" Airspace Between Rows of Studs
Wall Assembly Shall Extend From Slab to
Underside of Roof / Ceiling Assembly
(w/ Attic Draftstops per R302.12.1)




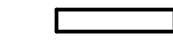

LEVEL 2
1/4" = 1'-0"



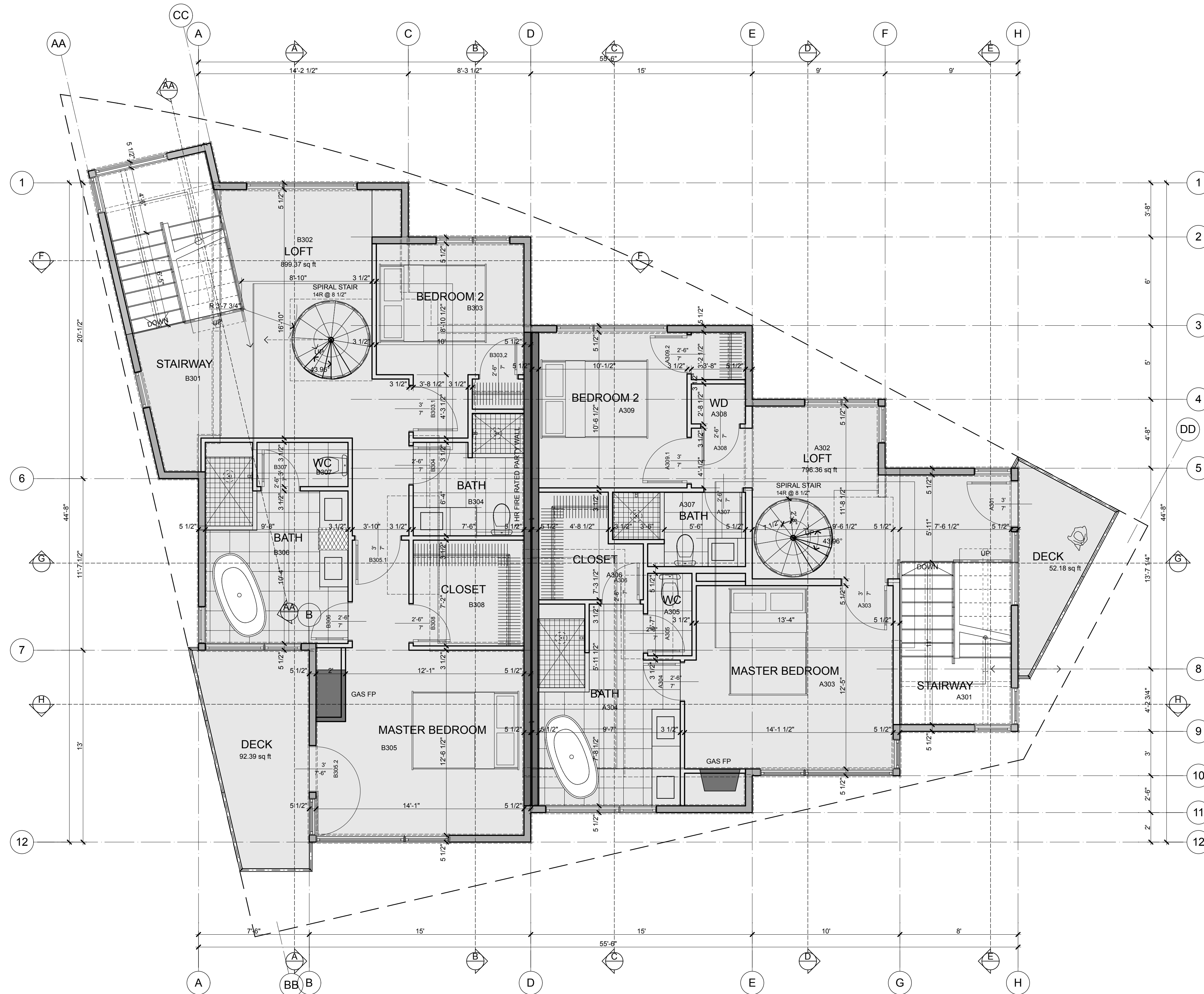
PROPOSED DUPLEX PROJECT FOR
LOT 10
THE CREEK AT FRISCO
FRISCO, COLORADO

A2.2

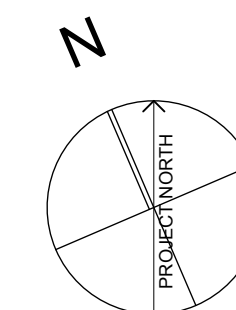
WALL LEGEND

-  **EXTERIOR WALL**
Exterior Finish over
Tyvek Air Infiltration Barrier over
1/2" Wood Sheathing over
2x6 Stud Framing @ 16" w/
Blown in Batt System (R-23)
Vapor Barrier per Manuf Specification
5/8" Gyp Bd Interior Finish
-  **INTERIOR PARTITION**
5/8" GWB Both Sides Over
2x4 or 2x6 Stud Framing @ 16" w/
3 1/2" Fiberglass Sound Batts
-  **PARTY WALL**
1HR FR GA File No WP 5508
Double Row 2x6 Studs @ 16" w/
5/8" GWB to Outside Face of Studs
3 1/2" Fiberglass Insulation In Both Rows
1" Airspace Between Rows of Studs

Wall Assembly Shall Extend From Slab to
Underside of Roof / Ceiling Assembly
(w/ Attic Draftstops per R302.12.1)




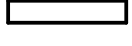

LEVEL 3
1/4" = 1'-0"



PROPOSED DUPLEX PROJECT FOR
LOT 10
THE CREEK AT FRISCO
FRISCO, COLORADO

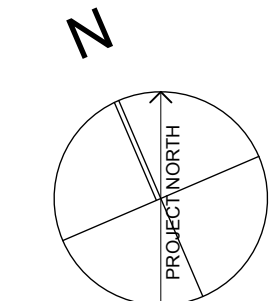
A2.3

WALL LEGEND

-  **EXTERIOR WALL**
Exterior Finish over
Tyvek Air Infiltration Barrier over
1/2" Wood Sheathing over
2x6 stud Framing @ 16" w/
Blown in Batt System (R-23)
Vapor Barrier per Manuf Specification
5/8" Gyp Bd Interior Finish
-  **INTERIOR PARTITION**
5/8" GWB Both Sides Over
2x4 or 2x6 Stud Framing @ 16" w/
3 1/2" Fiberglass Sound Batts
-  **PARTY WALL**
1HR FR GA File No WP 5508
Double Row 2x6 Studs @ 16" w/
5/8" GWB to Outside Face of Studs
3 1/2" Fiberglass Insulation in Both Rows
1" Airspace Between Rows of Studs
Wall Assembly Shall Extend From Slab to
Underside of Roof / Ceiling Assembly
(w/ Atic Draftstops per R302.12.1)



ROOF DECK
1/4" = 1'-0"

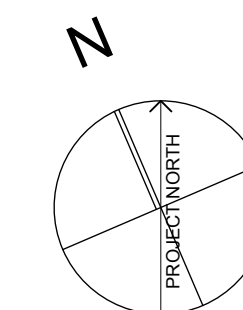


PROPOSED DUPLEX PROJECT FOR
LOT 10
THE CREEK AT FRISCO
FRISCO, COLORADO

A2.4

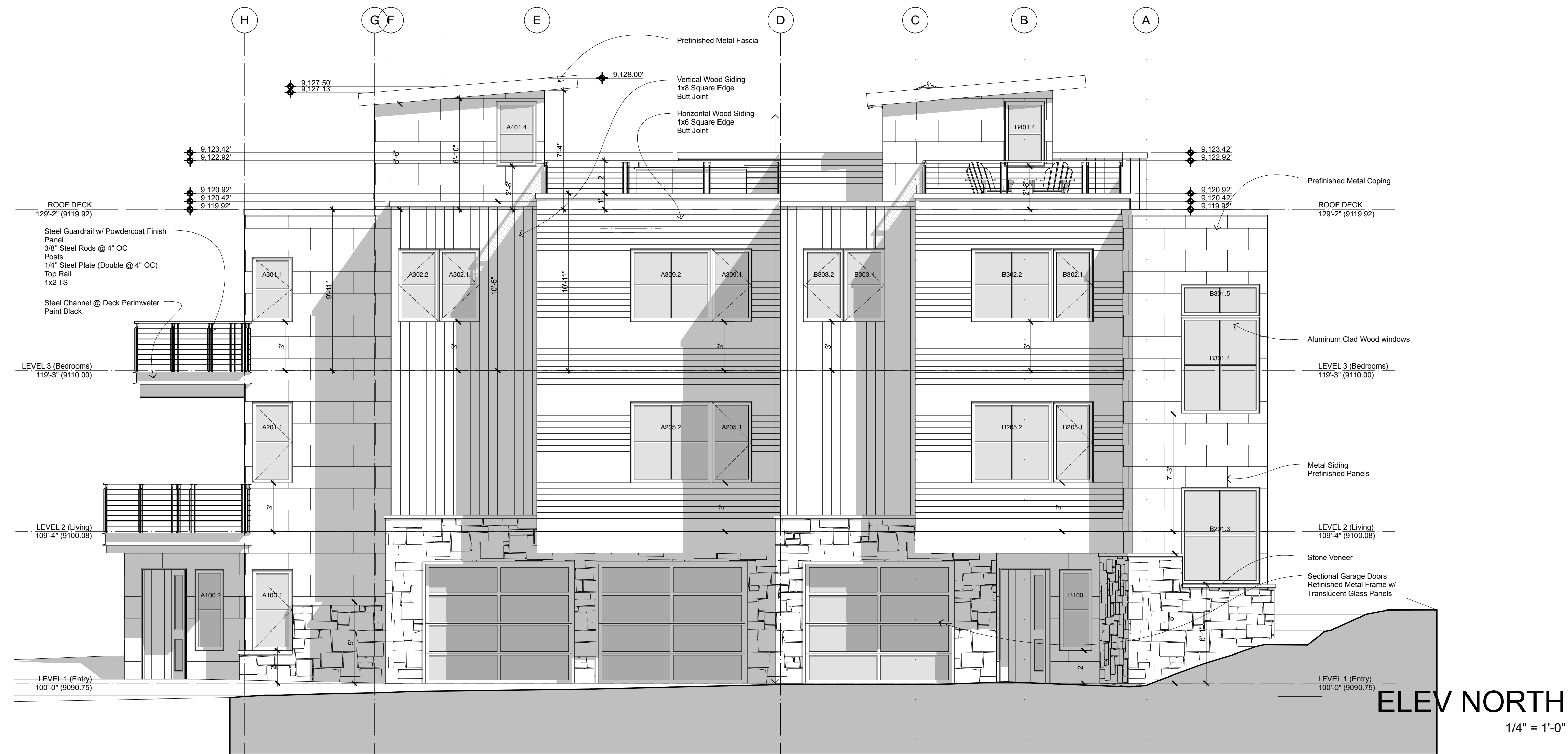


ROOF PLAN
1/4" = 1'-0"

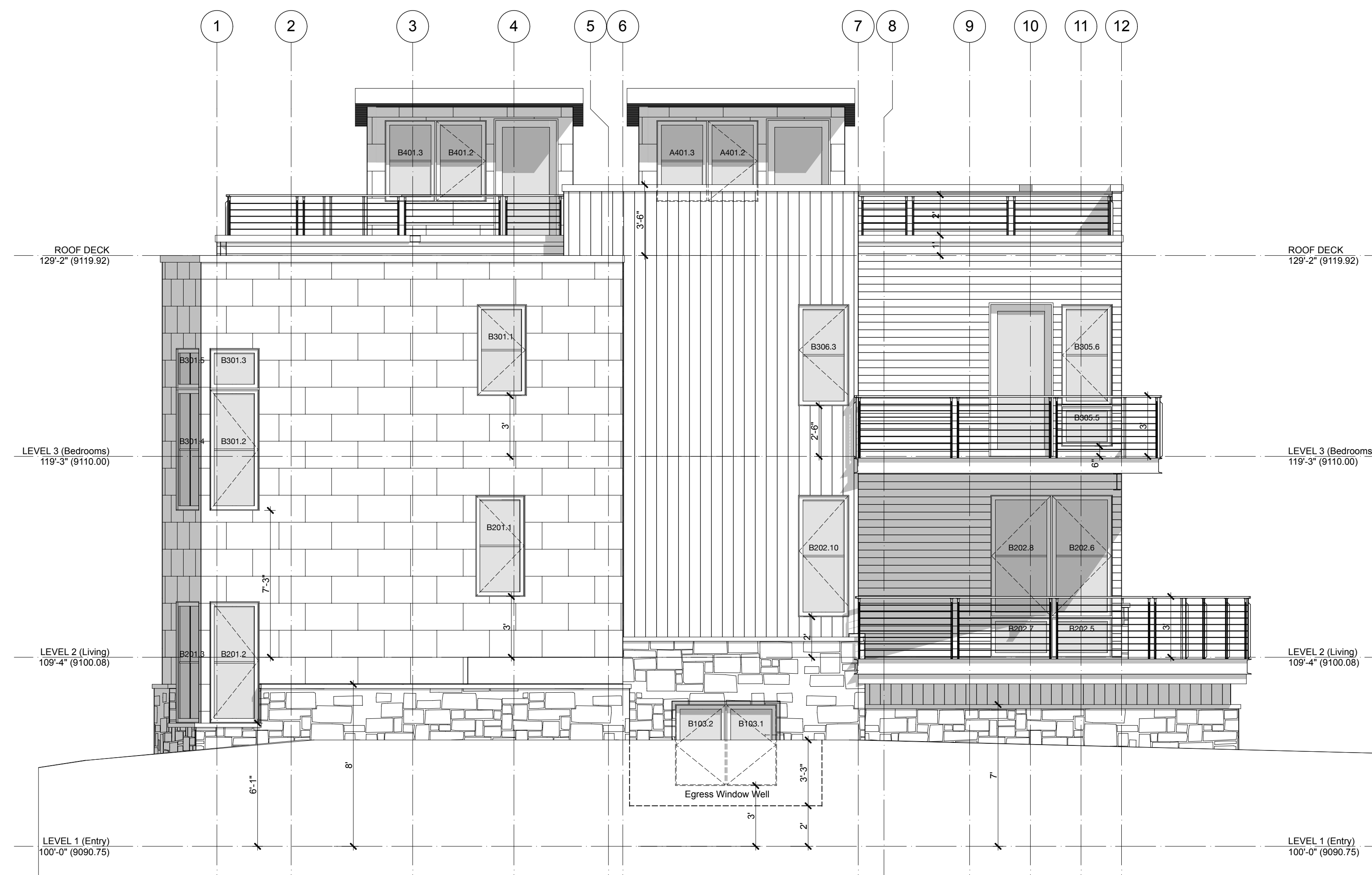


PROPOSED DUPLEX PROJECT FOR
LOT 10
THE CREEK AT FRISCO
FRISCO, COLORADO

A2.5



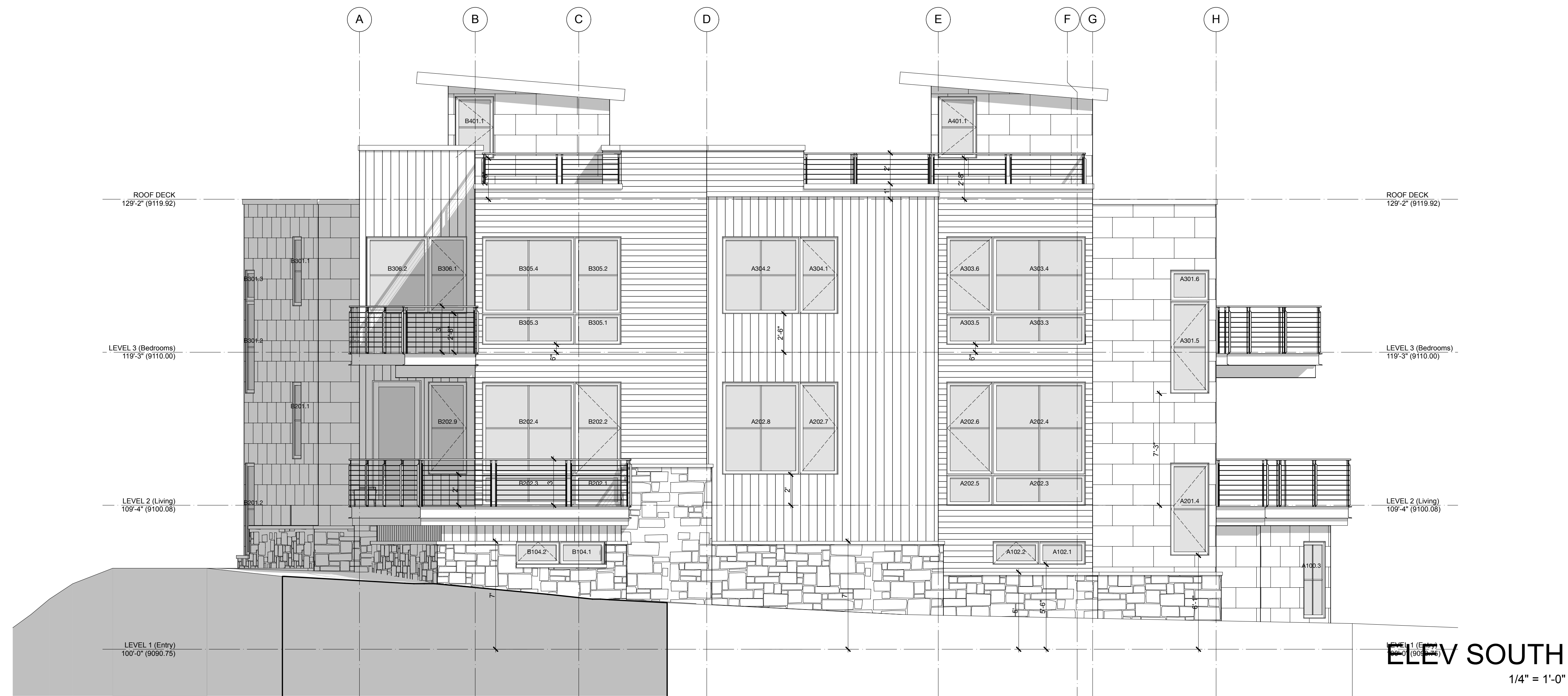
ELEV NORTH
1/4" = 1'-0"



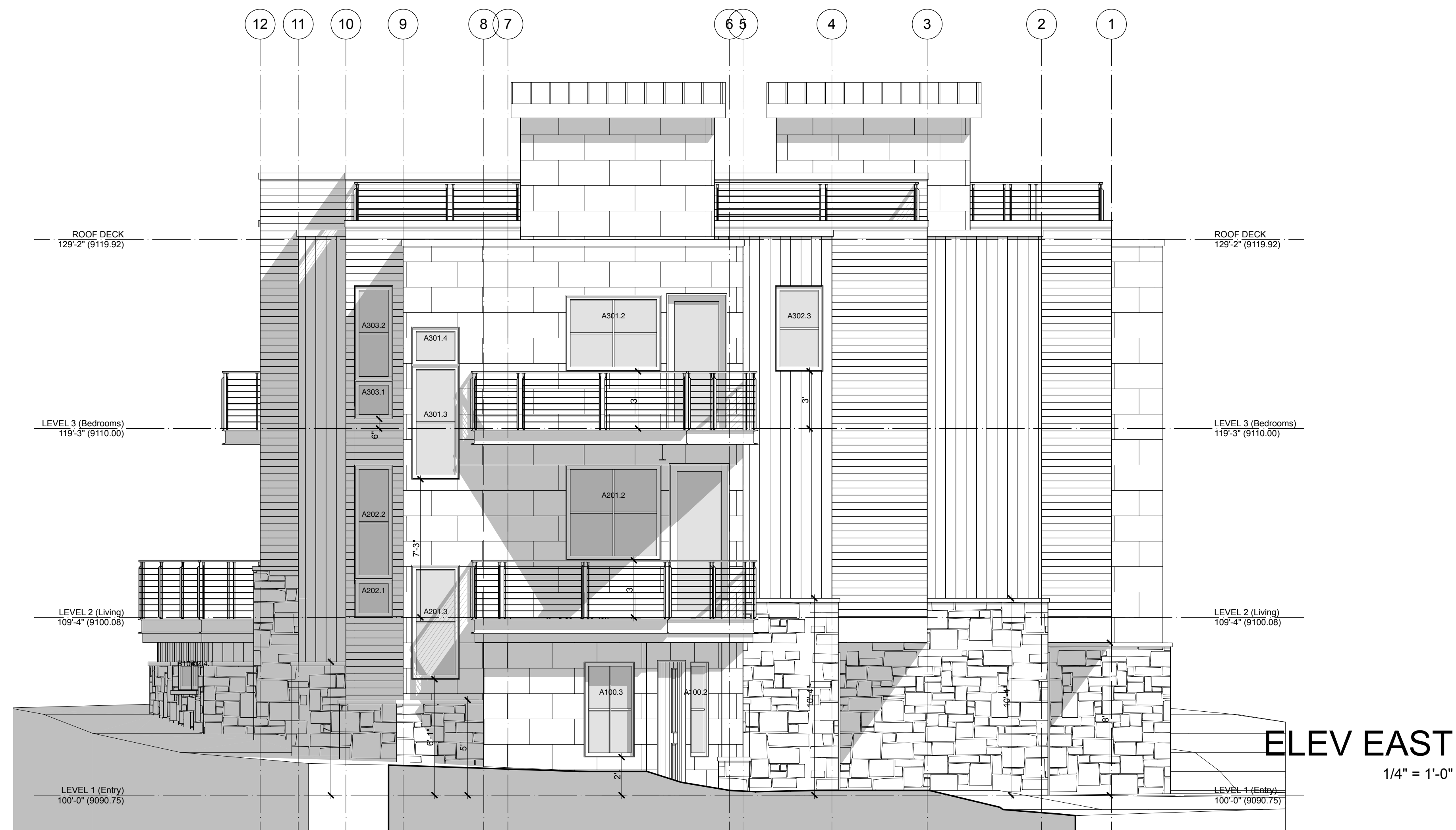
ELEV WEST
1/4" = 1'-0"

PROPOSED DUPLEX PROJECT FOR
LOT 10
THE CREEK AT FRISCO
FRISCO, COLORADO

A3.1



ELEV SOUTH
1/4" = 1'-0"



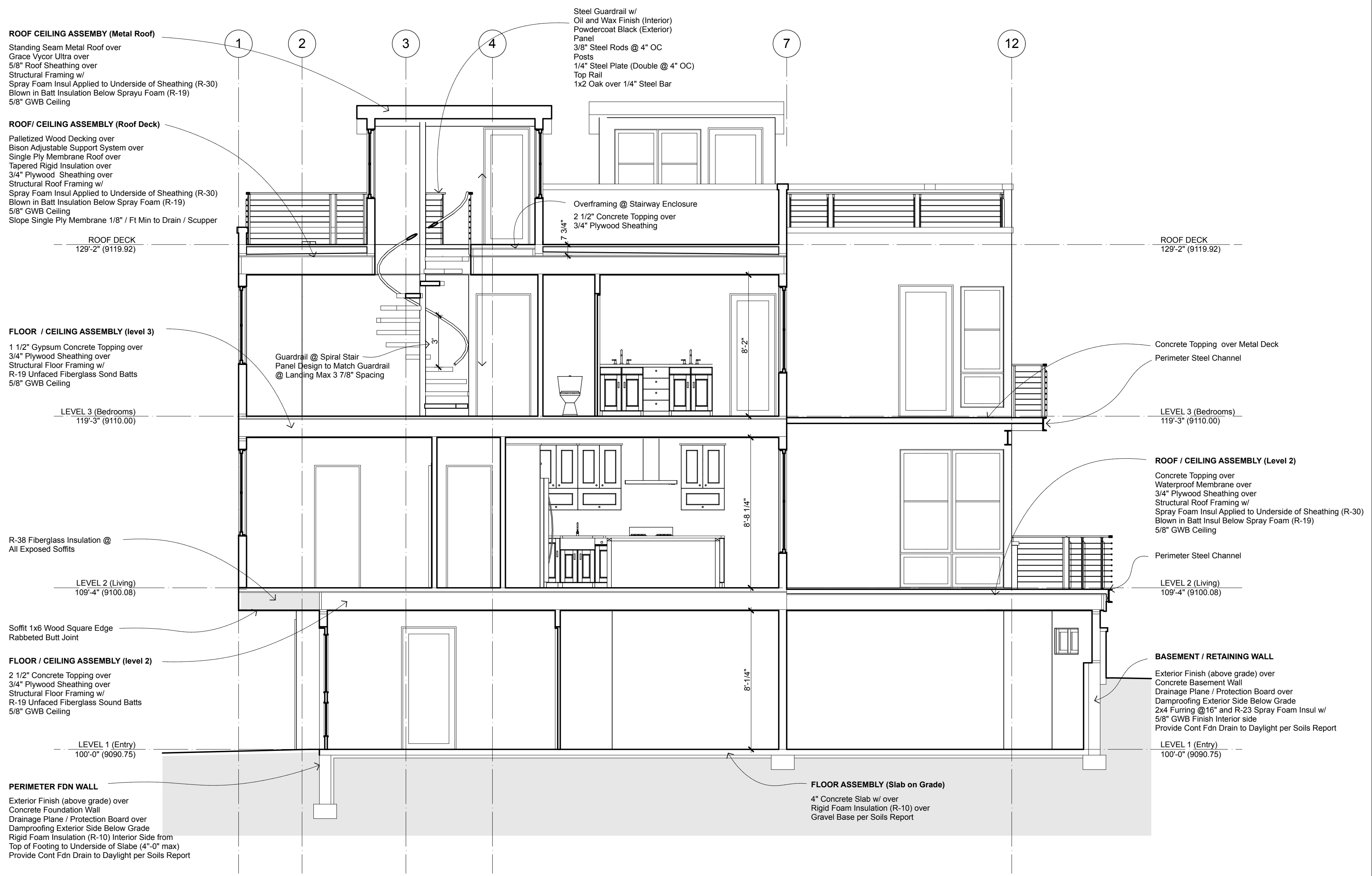
ELEV EAST
1/4" = 1'-0"

PROPOSED DUPLEX PROJECT FOR
LOT 10
THE CREEK AT FRISCO
FRISCO, COLORADO

A3.2



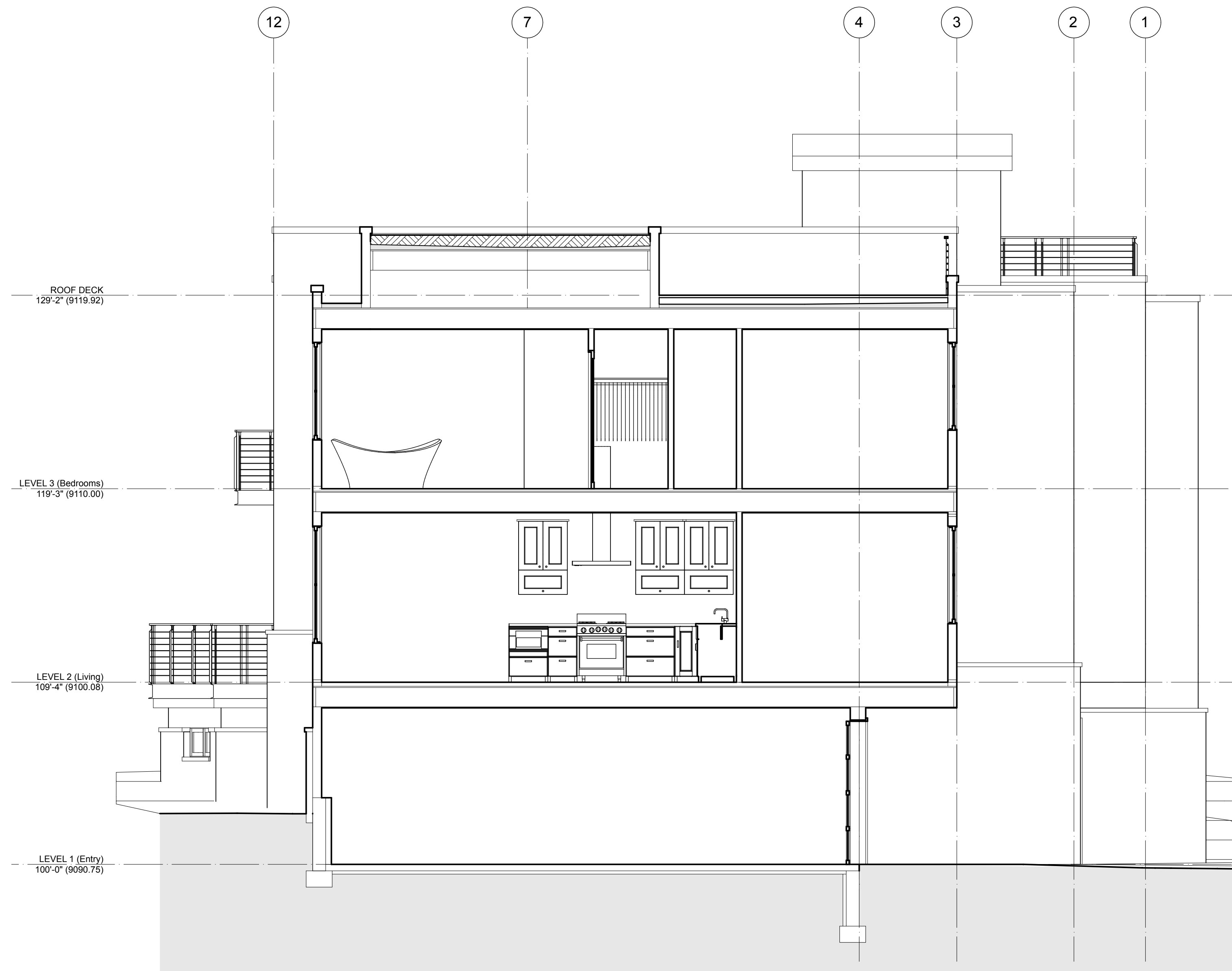
SECTION AA
1/4" = 1'-0"



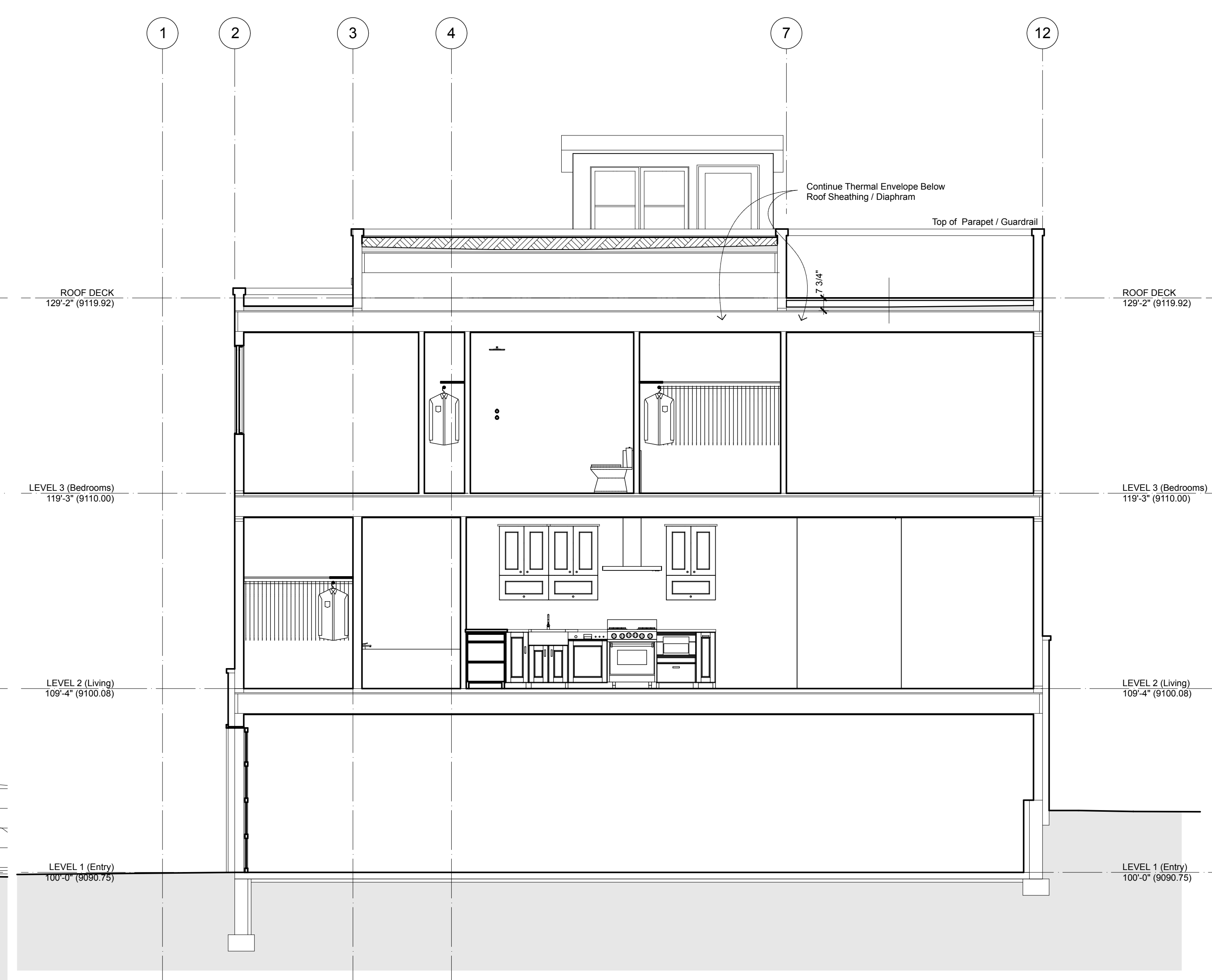
SECTION A4.1
1/4" = 1'-0"

PROPOSED DUPLEX PROJECT FOR
LOT 10
THE CREEK AT FRISCO
FRISCO, COLORADO

A4.1



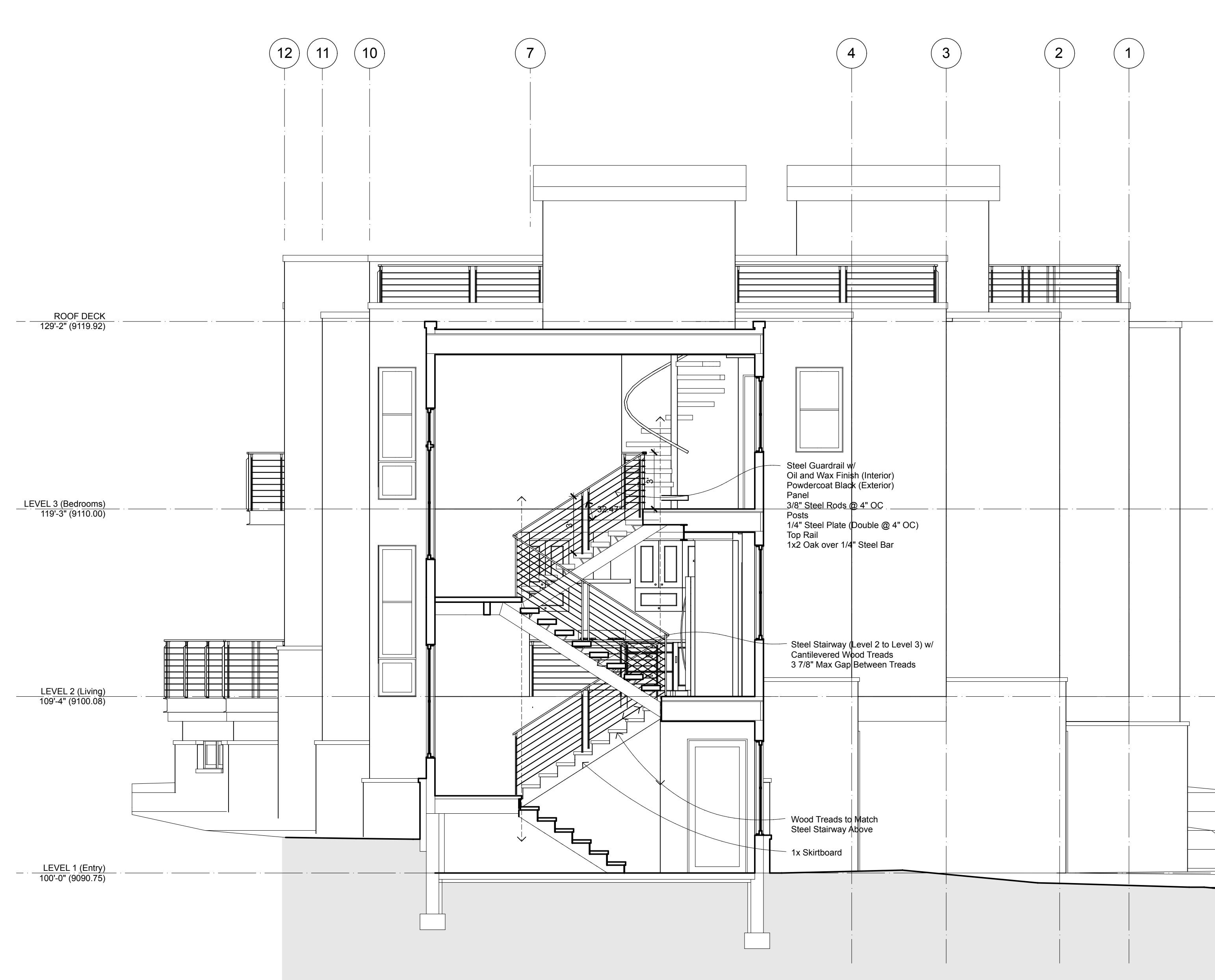
SECTION C
1/4" = 1'-0"



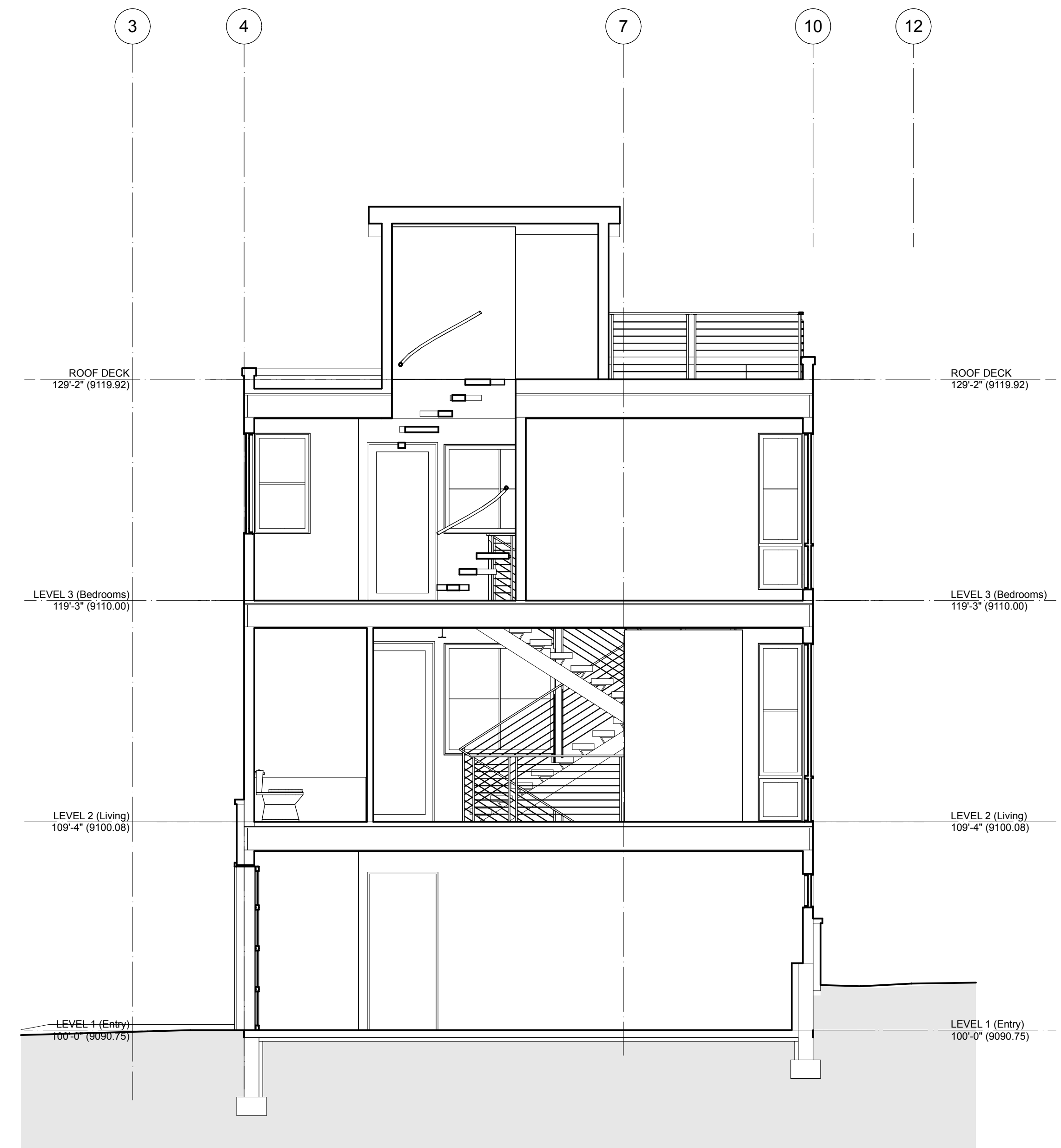
SECTION B
1/4" = 1'-0"

PROPOSED DUPLEX PROJECT FOR
LOT 10
THE CREEK AT FRISCO
FRISCO, COLORADO

A4.2



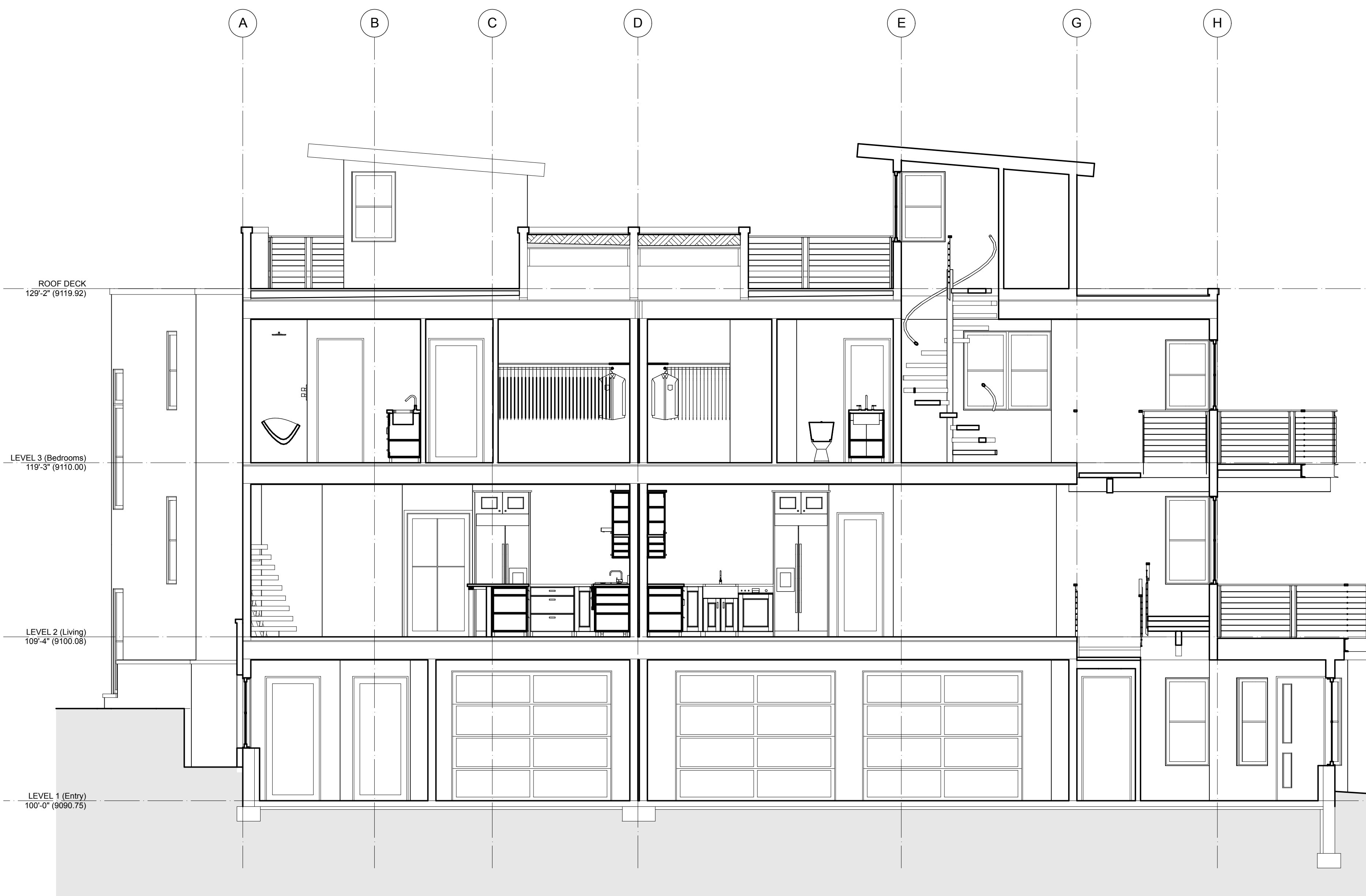
SECTION E
1/4" = 1'-0"



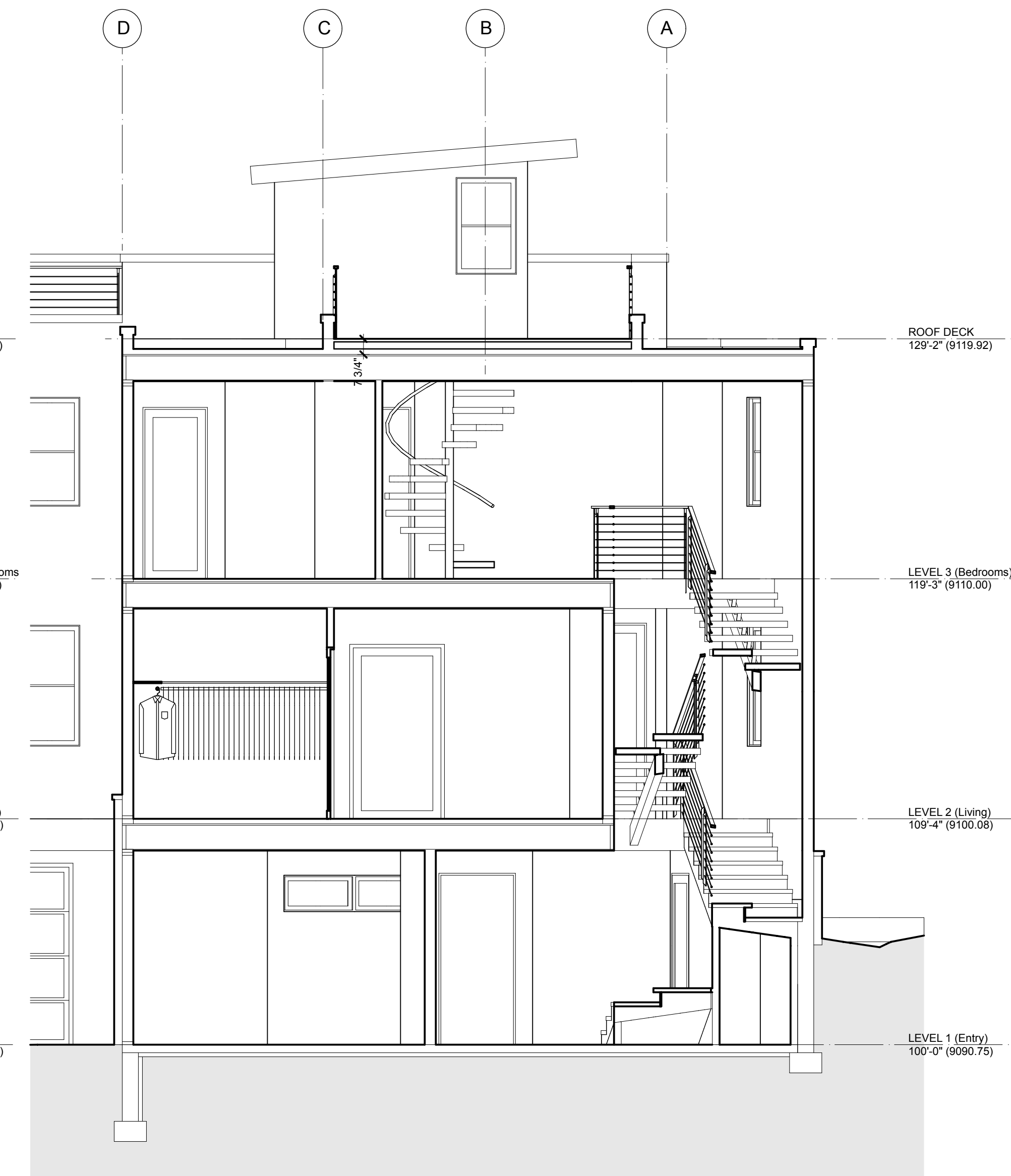
SECTION D
1/4" = 1'-0"

PROPOSED DUPLEX PROJECT FOR
LOT 10
THE CREEK AT FRISCO
FRISCO, COLORADO

A4.3



SECTION G
1/4" = 1'-0"



SECTION F
1/4" = 1'-0"

PROPOSED DUPLEX PROJECT FOR
LOT 10
THE CREEK AT FRISCO
FRISCO, COLORADO

A4.4

WINDOW SCHEDULE

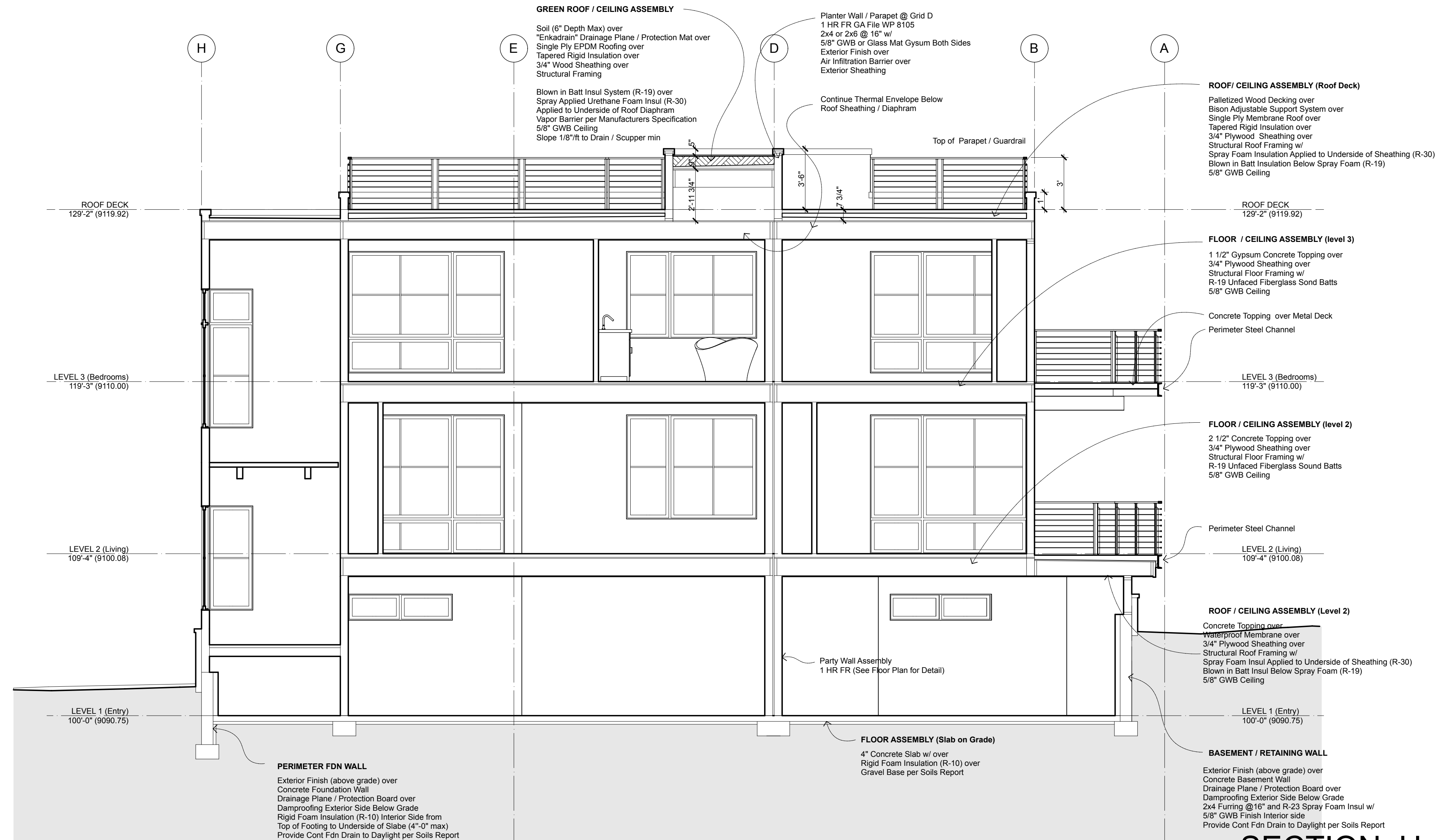
| ID | SIZE | | TYPE | MATERIAL | NOTES |
|--------|-------|--------|------|------------------|-------|
| | WIDTH | HEIGHT | | | |
| A100.1 | 2'-6" | 5' | --- | Paint BLK, gloss | |
| A100.2 | 2' | 5' | --- | Paint BLK, gloss | |
| A100.3 | 3' | 5' | --- | Paint BLK, gloss | |
| A102.1 | 3' | 1'-6" | --- | Paint BLK, gloss | |
| A102.2 | 3' | 1'-6" | --- | Paint BLK, gloss | |
| A201.1 | 2'-6" | 5' | --- | Paint BLK, gloss | |
| A201.2 | 5' | 5' | --- | Paint BLK, gloss | |
| A201.3 | 2'-6" | 6' | --- | Paint BLK, gloss | |
| A201.4 | 2'-6" | 6' | --- | Paint BLK, gloss | |
| A202.1 | 2' | 2' | --- | Paint BLK, gloss | |
| A202.2 | 2' | 6' | --- | Paint BLK, gloss | |
| A202.3 | 6' | 2' | --- | Paint BLK, gloss | |
| A202.4 | 6' | 6' | --- | Paint BLK, gloss | |
| A202.5 | 3' | 2' | --- | Paint BLK, gloss | |
| A202.6 | 3' | 6' | --- | Paint BLK, gloss | |
| A202.7 | 2'-6" | 6' | --- | Paint BLK, gloss | |
| A202.8 | 5' | 6' | --- | Paint BLK, gloss | |
| A205.1 | 2'-6" | 5' | --- | Paint BLK, gloss | |
| A205.2 | 5' | 5' | --- | Paint BLK, gloss | |
| A301.1 | 2'-6" | 4' | --- | Paint BLK, gloss | |
| A301.2 | 5' | 4' | --- | Paint BLK, gloss | |
| A301.3 | 2'-6" | 6' | --- | Paint BLK, gloss | |
| A301.4 | 2'-6" | 2' | --- | Paint BLK, gloss | |
| A301.5 | 2'-6" | 6' | --- | Paint BLK, gloss | |
| A301.6 | 2'-6" | 2' | --- | Paint BLK, gloss | |
| A302.1 | 2'-6" | 4'-6" | --- | Paint BLK, gloss | |
| A302.2 | 2'-6" | 4'-6" | --- | Paint BLK, gloss | |
| A302.3 | 2'-6" | 4'-6" | --- | Paint BLK, gloss | |

| ID | SIZE | | TYPE | MATERIAL | NOTES |
|--------|-------|--------|------|------------------|-------|
| | WIDTH | HEIGHT | | | |
| A303.3 | 6' | 2' | --- | Paint BLK, gloss | |
| A303.4 | 6' | 5' | --- | Paint BLK, gloss | |
| A303.5 | 3' | 2' | --- | Paint BLK, gloss | |
| A303.6 | 3' | 5' | --- | Paint BLK, gloss | |
| A304.1 | 2'-6" | 5' | --- | Paint BLK, gloss | |
| A304.2 | 5' | 5' | --- | Paint BLK, gloss | |
| A309.1 | 2'-6" | 4'-6" | --- | Paint BLK, gloss | |
| A309.2 | 5' | 4'-6" | --- | Paint BLK, gloss | |
| A401.1 | 2'-6" | 4' | --- | Paint BLK, gloss | |
| A401.2 | 2'-6" | 4' | --- | Paint BLK, gloss | |
| A401.3 | 2'-6" | 4' | --- | Paint BLK, gloss | |
| A401.4 | 2'-6" | 4' | --- | Paint BLK, gloss | |
| B100 | 2' | 5' | --- | Paint BLK, gloss | |
| B103.1 | 2'-6" | 4' | --- | Paint BLK, gloss | |
| B103.2 | 2'-6" | 4' | --- | Paint BLK, gloss | |
| B104.1 | 3' | 1'-6" | --- | Paint BLK, gloss | |
| B104.2 | 3' | 1'-6" | --- | Paint BLK, gloss | |
| B201.1 | 2'-6" | 5' | --- | Paint BLK, gloss | |
| B201.2 | 2'-6" | 6' | --- | Paint BLK, gloss | |
| B201.3 | 5' | 6' | --- | Paint BLK, gloss | |
| B202.1 | 3' | 2' | --- | Paint BLK, gloss | |
| B202.2 | 3' | 6' | --- | Paint BLK, gloss | |
| B202.3 | 6' | 2' | --- | Paint BLK, gloss | |
| B202.4 | 6' | 6' | --- | Paint BLK, gloss | |
| B202.5 | 3' | 2' | --- | Paint BLK, gloss | |
| B202.6 | 3' | 6' | --- | Paint BLK, gloss | |
| B202.7 | 3' | 2' | --- | Paint BLK, gloss | |
| B202.8 | 3' | 6' | --- | Paint BLK, gloss | |

| ID | SIZE | | TYPE | MATERIAL | NOTES |
|---------|-------|--------|------|------------------|-------|
| | WIDTH | HEIGHT | | | |
| B202.8 | 3' | 6' | --- | Paint BLK, gloss | |
| B202.9 | 2'-6" | 6' | --- | Paint BLK, gloss | |
| B202.10 | 2'-6" | 6' | --- | Paint BLK, gloss | |
| B205.1 | 2'-6" | 5' | --- | Paint BLK, gloss | |
| B205.2 | 5' | 5' | --- | Paint BLK, gloss | |
| B301.1 | 2'-6" | 4'-6" | --- | Paint BLK, gloss | |
| B301.2 | 2'-6" | 6' | --- | Paint BLK, gloss | |
| B301.3 | 2'-6" | 2' | --- | Paint BLK, gloss | |
| B301.4 | 5' | 6' | --- | Paint BLK, gloss | |
| B301.5 | 5' | 2' | --- | Paint BLK, gloss | |
| B302.1 | 2'-6" | 4'-6" | --- | Paint BLK, gloss | |
| B302.2 | 5' | 4'-6" | --- | Paint BLK, gloss | |
| B303.1 | 2'-6" | 4'-6" | --- | Paint BLK, gloss | |
| B303.2 | 2'-6" | 4'-6" | --- | Paint BLK, gloss | |
| B305.1 | 3' | 2' | --- | Paint BLK, gloss | |
| B305.2 | 3' | 5' | --- | Paint BLK, gloss | |
| B305.3 | 6' | 2' | --- | Paint BLK, gloss | |
| B305.4 | 6' | 5' | --- | Paint BLK, gloss | |
| B305.5 | 2'-6" | 2' | --- | Paint BLK, gloss | |
| B305.6 | 2'-6" | 5' | --- | Paint BLK, gloss | |
| B306.1 | 2'-6" | 5' | --- | Paint BLK, gloss | |
| B306.2 | 4' | 5' | --- | Paint BLK, gloss | |
| B306.3 | 2'-6" | 5' | --- | Paint BLK, gloss | |
| B401.1 | 2'-6" | 4' | --- | Paint BLK, gloss | |
| B401.2 | 2'-6" | 4' | --- | Paint BLK, gloss | |
| B401.3 | 2'-6" | 4' | --- | Paint BLK, gloss | |
| B401.4 | 2'-6" | 4' | --- | Paint BLK, gloss | |

DOOR SCHEDULE

| ID | TYPE | DOOR | | | | |
|--------|------|-------|-------|--------|------|-----|
| | | W | HT | THK | MATL | GLZ |
| A100.1 | --- | 3' | 7' | 1 3/4" | | |
| A100.2 | --- | 2'-6" | 7' | 1 3/4" | | |
| A102.1 | --- | 3' | 7' | 1 3/4" | | |
| A102.2 | --- | 9' | 7'-4" | 1 3/4" | | |
| A102.3 | --- | 9' | 7'-4" | 1 3/4" | | |
| A201 | --- | 3' | 8' | 1 3/4" | | |
| A203 | --- | 2'-6" | 7' | 1 3/4" | | |
| A204 | --- | 2'-6" | 7' | 1 3/4" | | |
| A205.1 | --- | 3' | 7' | 1 3/4" | | |
| A205.2 | --- | 2'-6" | 7' | 1 3/4" | | |
| A301 | --- | 3' | 7' | 1 3/4" | | |
| A303 | --- | 3' | 7' | 1 3/4" | | |
| A304 | --- | 2'-6" | 7' | 1 3/4" | | |
| A305 | --- | 2'-6" | 7' | 1 3/4" | | |
| A306 | --- | 2'-6" | 7' | 1 3/4" | | |
| A307 | --- | 2'-6" | 7' | 1 3/4" | | |
| A308 | --- | 2'-6" | 7' | 1 3/4" | | |
| A309.1 | --- | 3' | 7' | 1 3/4" | | |
| A309.2 | --- | 2'-6" | 7' | 1 3/4" | | |
| A401 | --- | 3' | 6'-8" | 1 3/4" | | |
| A402 | --- | 2'-6" | 6' | 1 3/4" | | |
| B100.1 | --- | 3' | 7' | 1 3/4" | | |
| B100.2 | --- | 3' | 7' | 1 3/4" | | |
| B102 | --- | 2'-6" | 7' | 1 3/4" | | |
| B103.1 | --- | 3' | 7' | 1 3/4" | | |
| B103.2 | --- | 3' | 7' | 1 3/4" | | |
| B104.1 | --- | 3' | 7' | 1 3/4" | | |
| B104.2 | --- | 9' | 7'-4" | 1 3/4" | | |
| B202 | --- | 3' | 8' | 1 3/4" | | |
| B203 | --- | 2'-6" | 7' | 1 3/4" | | |
| B204 | --- | 2'-6" | 7' | 1 3/4" | | |
| B205 | --- | 3'-6" | 7' | 1 3/4" | | |
| B206 | --- | 2'-6" | 7' | 1 3/4" | | |
| B303.2 | --- | 2'-6" | 7' | 1 3/4" | | |
| B303.1 | --- | 3' | 7' | 1 3/4" | | |
| B304 | --- | 2'-6" | 7' | 1 3/4" | | |
| B305.1 | --- | 3' | 7' | 1 3/4" | | |
| B305.2 | --- | 3' | 7'-6" | 1 3/4" | | |
| B306 | --- | 2'-6" | 7' | 1 3/4" | | |
| B307 | --- | 2'-6" | 7' | 1 3/4" | | |
| B308 | --- | 2'-6" | 7' | 1 3/4" | | |
| B401 | --- | 3' | 6'-8" | 1 3/4" | | |
| B402 | --- | 2'-6" | 6' | 1 3/4" | | |



PROPOSED DUPLEX PROJECT FOR
LOT 10
THE CREEK AT FRISCO
FRISCO, COLORADO

SECTION H A4.5

1/4" = 1'-0"