

As the extensive renovation at the Summit Suites hotel progresses, we have reached a substantial milestone with our guest rooms being ready for occupancy. As we hope to begin generating revenue for the business and tax revenue for the Town of Frisco, we would like to receive approval to begin operating and welcoming guests into the hotel.

Much as we did in March of 2022 when construction began, we will direct guests arriving to our eastern parking lot. The parking spaces on this side of the building will be marked for ADA parking and short term guest registration. Guests will enter the hotel through the door on the eastern side of the building and will be directed to a temporary check in situated in room 102. From there, they will be able to access the newly renovated elevators. Renovations in all 4 of the existing stairwells will also be complete. After check in, guests will be directed to the large, western parking lot for parking.

Inside, all areas of active construction will be blocked off for guest access. Guests will be able to access guest room floors where renovations are completed, the limited space at the 1st floor elevator landing, as well as all stairwells for emergency egress. The fire and life safety systems will be fully completed, inspected, and operational in these areas.

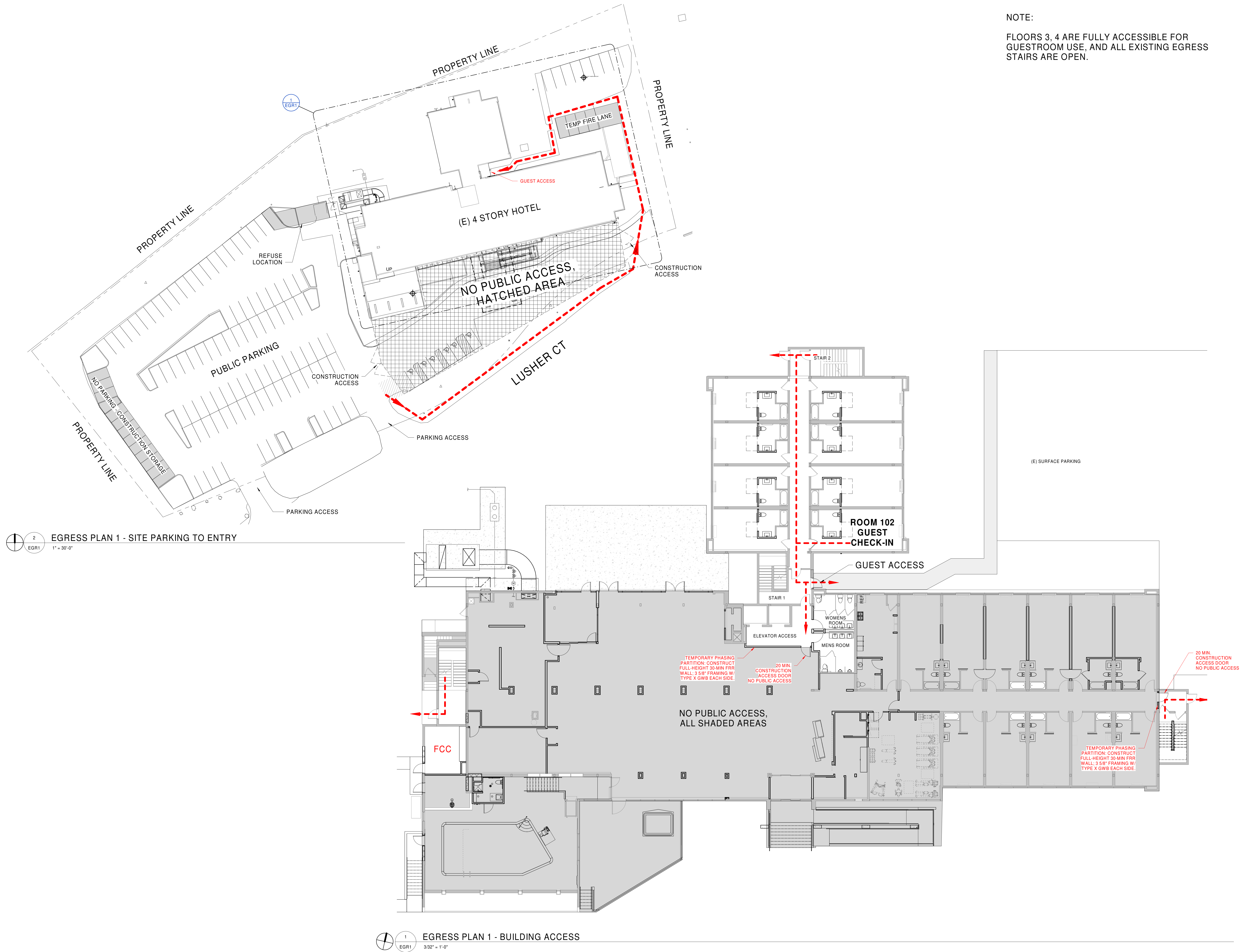
The limited remaining construction operations will be taking place on the first floor in an area blocked off with a temporary wall made out of drywall. On the exterior, construction will continue on the port a cachet and driveway, with operations being staged in the secured, fenced-in area. Access to this fenced in area will be at either end of the existing driveway on the East and West sides. The fencing is currently in place along all three sides to limit access and ensure safety. As necessary, storage containers will remain on the far western edge of the parking lot and roll off trash containers will be staged on the northern end of the parking lot, near the kitchen area that is distant from the various guest access points.

Upon the completion of the port a cachet, anticipated in January, we will resume a more regular operation where guests will enter and exit through the new entrance. We recognize there will be additional sitework required in the spring, such as building the third elevator shaft, relocating the driveway entrance, and completing the landscaping throughout the parking lot and site. That work will be completed in the spring as soon as weather permits.

Thank you for your support of this project.

NOTE:

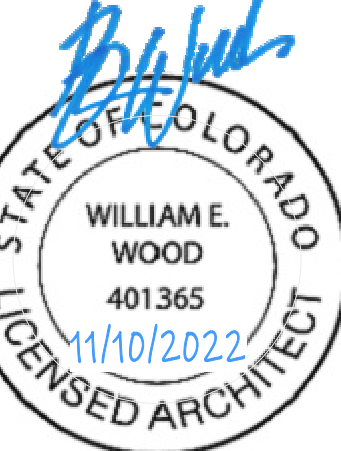
FLOORS 3, 4 ARE FULLY ACCESSIBLE FOR GUESTROOM USE, AND ALL EXISTING EGRESS STAIRS ARE OPEN.



2 EGRESS PLAN 1 - SITE PARKING TO ENTRY
1" = 30'-0"

1 EGRESS PLAN 1 - BUILDING ACCESS
3/32" = 1'-0"

BEDFORD LODGING
AC HOTEL BY MARRIOTT
1202 SUMMIT BLVD
FRISCO, CO 80443



CONSTRUCTION DOCUMENTS

10/12/2022
PROJECT | BMM_ACRISCO
DESIGNED BY | Designer
DRAWN BY | Author
REVISIONS

Unnamed

EGR1