



WINTER USE of the Frisco Peninsula Trails: Public trail closures exist. Open trails are accessible via the Frisco Nordic Center ONLY, fees apply. Paved Recreation Path open to free public use year-round.



The Peninsula Recreation Area is located in the White River National Forest and operates under permit from the USDA Forest Service. Protect this unique natural resource so we can keep enjoying it for years to come.

FRISCO ADVENTURE PARK

- Day Lodge & Slopeside Hall
- Nordic Center
- Bike Park
- Skate Park
- Peak One Disc Golf Course
- Wedding Platform
- Tubing Hill (winter only)
- Trailhead
- Chuck Wagon Rides
- Parking Area
- Portable Toilet
- Water

FRISCO BIKE PARK

- UPHILL ROUTE - back to the top
- Easy Slopeside Line
- Medium Slopeside Line
- Difficult Slopeside Line
- Dual Slalom

FRISCO PENINSULA TRAILS

- Family Friendly Trail
- Easiest Trail
- Intermediate Trail
- Advanced Trail
- Little Lottie & Jody's Nugget is a 2.3 mile recommended hiking loop from the PRA trailhead
- Trails are multi-use: open to hikers, runners, type 1 Ebikes & mountain bikes
- Sky Pilot and Aftermath are directional, downhill-only for bicycles
- Little Lottie is a hike-only trail
- All other trails are multi-directional, multi-use

FOR MORE INFORMATION

- Frisco Adventure Park: friscoadventurepark.com 970-686-2558 | Recreation@townoffrisco.com
- Town of Frisco: townoffrisco.com
- Dillon Ranger District Trails: dillonrangerdistrict.com
- National Forest Campgrounds: recreation.gov
- Summit County Paved Rec Path System: summitcountyco.gov
- Summit Stage Free Public Transportation: summitstage.com



TRAIL MAP



Hiking and Biking in Frisco, CO

CAUTION: WILDLIFE IN THE AREA

Coyotes are active in the area. Coyotes in populated areas can lose their fear of humans. They have been known to approach people and attack pets. Remember, never approach or feed a coyote or other wild animals. Keep pets on a short leash.

Moose are active in the area. Watch from a distance! Always keep your dog on a leash and away from moose.

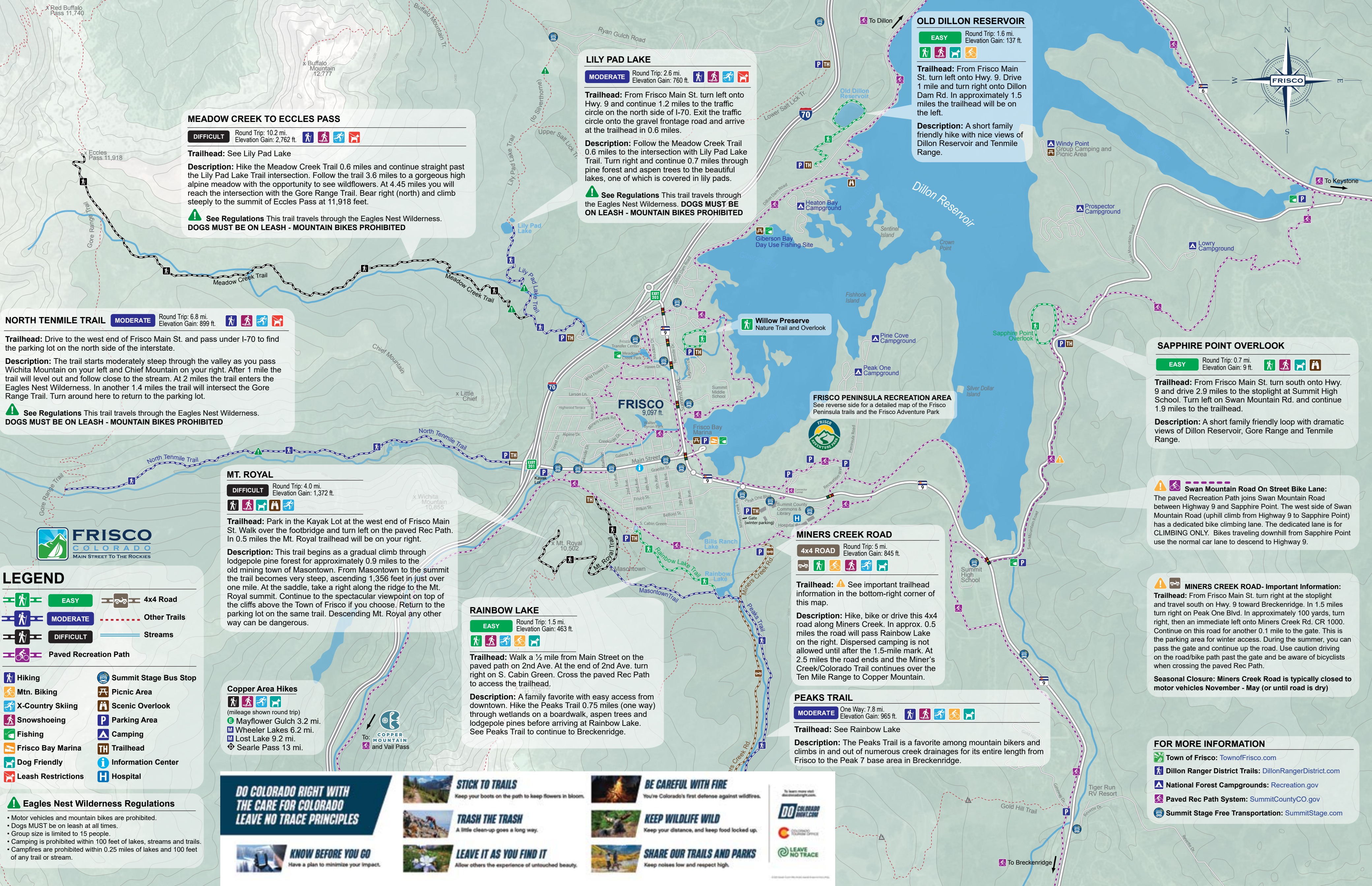
GEAR CHECKLIST

- Sunscreen/Lip Balm
- Sunglasses
- Hat
- Rain Jacket
- Maps/GPS
- Plenty of Water
- Food/Snacks
- First Aid Kit
- Bike Repair Kit
- Dog Leash

Frisco Copper Information Center
TOInfo@townoffrisco.com 970-668-5547
300 Main Street Frisco, CO 80443

This free map is published by the Town of Frisco for informational purposes only. This map does not comply with National Mapping Accuracy Standards and represents only the approximate relative location of trails and bike paths. Not all roads are shown or named. Users of this map should be aware of the potential hazards and dangers of hiking and bicycling. Users bear the full responsibility for his or her safety. ©2025 Town of Frisco

IN CASE OF EMERGENCY CALL 911



MEADOW CREEK TO ECCLES PASS

DIFFICULT Round Trip: 10.2 mi. Elevation Gain: 2,762 ft. [Hiking] [Mtn. Biking] [X-Country Skiing] [Snowshoeing]

Trailhead: See Lily Pad Lake

Description: Hike the Meadow Creek Trail 0.6 miles and continue straight past the Lily Pad Lake Trail intersection. Follow the trail 3.6 miles to a gorgeous high alpine meadow with the opportunity to see wildflowers. At 4.45 miles you will reach the intersection with the Gore Range Trail. Bear right (north) and climb steeply to the summit of Eccles Pass at 11,918 feet.

See Regulations This trail travels through the Eagles Nest Wilderness. **DOGS MUST BE ON LEASH - MOUNTAIN BIKES PROHIBITED**

NORTH TENMILE TRAIL

MODERATE Round Trip: 6.8 mi. Elevation Gain: 899 ft. [Hiking] [Mtn. Biking] [X-Country Skiing] [Snowshoeing]

Trailhead: Drive to the west end of Frisco Main St. and pass under I-70 to find the parking lot on the north side of the interstate.

Description: The trail starts moderately steep through the valley as you pass Wichita Mountain on your left and Chief Mountain on your right. After 1 mile the trail will level out and follow close to the stream. At 2 miles the trail enters the Eagles Nest Wilderness. In another 1.4 miles the trail will intersect the Gore Range Trail. Turn around here to return to the parking lot.

See Regulations This trail travels through the Eagles Nest Wilderness. **DOGS MUST BE ON LEASH - MOUNTAIN BIKES PROHIBITED**

MT. ROYAL

DIFFICULT Round Trip: 4.0 mi. Elevation Gain: 1,372 ft. [Hiking] [Mtn. Biking] [X-Country Skiing] [Snowshoeing]

Trailhead: Park in the Kayak Lot at the west end of Frisco Main St. Walk over the footbridge and turn left on the paved Rec Path. In 0.5 miles the Mt. Royal trailhead will be on your right.

Description: This trail begins as a gradual climb through lodgepole pine forest for approximately 0.9 miles to the old mining town of Masontown. From Masontown to the summit the trail becomes very steep, ascending 1,356 feet in just over one mile. At the saddle, take a right along the ridge to the Mt. Royal summit. Continue to the spectacular viewpoint on top of the cliffs above the Town of Frisco if you choose. Return to the parking lot on the same trail. Descending Mt. Royal any other way can be dangerous.

LEGEND

[Hiking]	EASY	[4x4 Road]
[Mtn. Biking]	MODERATE	[Other Trails]
[X-Country Skiing]	DIFFICULT	[Streams]
[Snowshoeing]		[Paved Recreation Path]

[Summit Stage Bus Stop]	Summit Stage Bus Stop
[Picnic Area]	Picnic Area
[Scenic Overlook]	Scenic Overlook
[Parking Area]	Parking Area
[Camping]	Camping
[Trailhead]	Trailhead
[Information Center]	Information Center
[Hospital]	Hospital

Eagles Nest Wilderness Regulations

- Motor vehicles and mountain bikes are prohibited.
- Dogs MUST be on leash at all times.
- Group size is limited to 15 people.
- Camping is prohibited within 100 feet of lakes, streams and trails.
- Campfires are prohibited within 0.25 miles of lakes and 100 feet of any trail or stream.

LILY PAD LAKE

MODERATE Round Trip: 2.6 mi. Elevation Gain: 760 ft. [Hiking] [Mtn. Biking] [X-Country Skiing] [Snowshoeing]

Trailhead: From Frisco Main St. turn left onto Hwy. 9 and continue 1.2 miles to the traffic circle on the north side of I-70. Exit the traffic circle onto the gravel frontage road and arrive at the trailhead in 0.6 miles.

Description: Follow the Meadow Creek Trail 0.6 miles to the intersection with Lily Pad Lake Trail. Turn right and continue 0.7 miles through pine forest and aspen trees to the beautiful lakes, one of which is covered in lily pads.

See Regulations This trail travels through the Eagles Nest Wilderness. **DOGS MUST BE ON LEASH - MOUNTAIN BIKES PROHIBITED**

OLD DILLON RESERVOIR

EASY Round Trip: 1.6 mi. Elevation Gain: 137 ft. [Hiking] [Mtn. Biking] [X-Country Skiing] [Snowshoeing]

Trailhead: From Frisco Main St. turn left onto Hwy. 9. Drive 1 mile and turn right onto Dillon Dam Rd. In approximately 1.5 miles the trailhead will be on the left.

Description: A short family friendly hike with nice views of Dillon Reservoir and Tennile Range.

SAPPHIRE POINT OVERLOOK

EASY Round Trip: 0.7 mi. Elevation Gain: 9 ft. [Hiking] [Mtn. Biking] [X-Country Skiing] [Snowshoeing]

Trailhead: From Frisco Main St. turn south onto Hwy. 9 and drive 2.9 miles to the stoplight at Summit High School. Turn left on Swan Mountain Rd. and continue 1.9 miles to the trailhead.

Description: A short family friendly loop with dramatic views of Dillon Reservoir, Gore Range and Tennile Range.

Swan Mountain Road On Street Bike Lane:

The paved Recreation Path joins Swan Mountain Road between Highway 9 and Sapphire Point. The west side of Swan Mountain Road (uphill climb from Highway 9 to Sapphire Point) has a dedicated bike climbing lane. The dedicated lane is for CLIMBING ONLY. Bikes traveling downhill from Sapphire Point use the normal car lane to descend to Highway 9.

MINERS CREEK ROAD- Important Information:

Trailhead: From Frisco Main St. turn right at the stoplight and travel south on Hwy. 9 toward Breckenridge. In 1.5 miles turn right on Peak One Blvd. In approximately 100 yards, turn right, then an immediate left onto Miners Creek Rd. CR 1000. Continue on this road for another 0.1 mile to the gate. This is the parking area for winter access. During the summer, you can pass the gate and continue up the road. Use caution driving on the road/bike path past the gate and be aware of bicyclists when crossing the paved Rec Path.

Seasonal Closure: Miners Creek Road is typically closed to motor vehicles November - May (or until road is dry)

MINERS CREEK ROAD

4x4 ROAD Round Trip: 5 mi. Elevation Gain: 845 ft. [Hiking] [Mtn. Biking] [X-Country Skiing] [Snowshoeing]

Trailhead: ⚠ See important trailhead information in the bottom-right corner of this map.

Description: Hike, bike or drive this 4x4 road along Miners Creek. In approx. 0.5 miles the road will pass Rainbow Lake on the right. Dispersed camping is not allowed until after the 1.5-mile mark. At 2.5 miles the road ends and the Miner's Creek/Colorado Trail continues over the Ten Mile Range to Copper Mountain.

PEAKS TRAIL

MODERATE One Way: 7.8 mi. Elevation Gain: 965 ft. [Hiking] [Mtn. Biking] [X-Country Skiing] [Snowshoeing]

Trailhead: See Rainbow Lake

Description: The Peaks Trail is a favorite among mountain bikers and climbs in and out of numerous creek drainages for its entire length from Frisco to the Peak 7 base area in Breckenridge.

RAINBOW LAKE

EASY Round Trip: 1.5 mi. Elevation Gain: 463 ft. [Hiking] [Mtn. Biking] [X-Country Skiing] [Snowshoeing]

Trailhead: Walk a ½ mile from Main Street on the paved path on 2nd Ave. At the end of 2nd Ave. turn right on S. Cabin Green. Cross the paved Rec Path to access the trailhead.

Description: A family favorite with easy access from downtown. Hike the Peaks Trail 0.75 miles (one way) through wetlands on a boardwalk, aspen trees and lodgepole pines before arriving at Rainbow Lake. See Peaks Trail to continue to Breckenridge.

DO COLORADO RIGHT WITH THE CARE FOR COLORADO LEAVE NO TRACE PRINCIPLES

STICK TO TRAILS

Keep your boots on the path to keep flowers in bloom.

TRASH THE TRASH

A little clean-up goes a long way.

LEAVE IT AS YOU FIND IT

Allow others the experience of untouched beauty.

BE CAREFUL WITH FIRE

You're Colorado's first defense against wildfires.

KEEP WILDLIFE WILD

Keep your distance, and keep food locked up.

SHARE OUR TRAILS AND PARKS

Keep noises low and respect high.

KNOW BEFORE YOU GO

Have a plan to minimize your impact.

DO COLORADO RIGHT.COM

Colorado State Parks

LEAVE NO TRACE

FOR MORE INFORMATION

- Town of Frisco: TownofFrisco.com
- Dillon Ranger District Trails: DillonRangerDistrict.com
- National Forest Campgrounds: Recreation.gov
- Paved Rec Path System: SummitCountyCO.gov
- Summit Stage Free Transportation: SummitStage.com